

PHOX2B Rabbit mAb

Catalog # AP78528

Product Information

Application	WB, IHC-P, IF, ICC
Primary Accession	Q99453
Reactivity	Human, Mouse
Host	Rabbit
Clonality	Monoclonal Antibody
Isotype	IgG
Conjugate	Unconjugated
Immunogen	A synthesized peptide derived from human PHOX2B
Purification	Affinity Chromatography
Calculated MW	31621

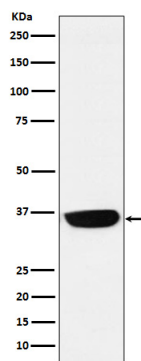
Additional Information

Gene ID	8929
Other Names	PHOX2B
Dilution	WB~~1/500-1/1000 IHC-P~~N/A IF~~1:50~200 ICC~~N/A
Format	Liquid in 10mM PBS, pH 7.4, 150mM sodium chloride, 0.05% BSA, 0.02% sodium azide and 50% glycerol.
Storage	Store at 4°C short term. Aliquot and store at -20°C long term. Avoid freeze/thaw cycles.

Protein Information

Name	PHOX2B
Synonyms	PMX2B
Function	Involved in the development of several major noradrenergic neuron populations, including the locus coeruleus. Transcription factor which could determine a neurotransmitter phenotype in vertebrates. Enhances second-messenger-mediated activation of the dopamine beta- hydrolase and c-fos promoters, and of several enhancers including cAMP- response element and serum-response element.
Cellular Location	Nucleus {ECO:0000255 PROSITE-ProRule:PRU00108}.
Tissue Location	Expressed in neuroblastoma, brain and adrenal gland

Images



Please note: All products are 'FOR RESEARCH USE ONLY. NOT FOR USE IN DIAGNOSTIC OR THERAPEUTIC PROCEDURES'.