

# ARTS1 Antibody (Center)

Purified Rabbit Polyclonal Antibody (Pab)

Catalog # AP7859c

## Product Information

---

Application	WB, E
Primary Accession	<a href="#">Q9NZ08</a>
Reactivity	Human
Host	Rabbit
Clonality	Polyclonal
Isotype	Rabbit IgG
Clone Names	RB16869
Calculated MW	107235
Antigen Region	451-480

## Additional Information

---

Gene ID	51752
Other Names	Endoplasmic reticulum aminopeptidase 1, 3411-, ARTS-1, Adipocyte-derived leucine aminopeptidase, A-LAP, Aminopeptidase PILS, Puromycin-insensitive leucyl-specific aminopeptidase, PILS-AP, Type 1 tumor necrosis factor receptor shedding aminopeptidase regulator, ERAP1, APPILS, ARTS1, KIAA0525
Target/Specificity	This ARTS1 antibody is generated from rabbits immunized with a KLH conjugated synthetic peptide between 451-480 amino acids from the Central region of human ARTS1.
Dilution	WB~~1:1000 E~~Use at an assay dependent concentration.
Format	Purified polyclonal antibody supplied in PBS with 0.09% (W/V) sodium azide. This antibody is prepared by Saturated Ammonium Sulfate (SAS) precipitation followed by dialysis against PBS.
Storage	Maintain refrigerated at 2-8°C for up to 2 weeks. For long term storage store at -20°C in small aliquots to prevent freeze-thaw cycles.
Precautions	ARTS1 Antibody (Center) is for research use only and not for use in diagnostic or therapeutic procedures.

## Protein Information

---

Name	ERAP1
Synonyms	APPILS, ARTS1, KIAA0525

<b>Function</b>	Aminopeptidase that plays a central role in peptide trimming, a step required for the generation of most HLA class I-binding peptides. Peptide trimming is essential to customize longer precursor peptides to fit them to the correct length required for presentation on MHC class I molecules. Strongly prefers substrates 9-16 residues long. Rapidly degrades 13-mer to a 9-mer and then stops. Preferentially hydrolyzes the residue Leu and peptides with a hydrophobic C-terminus, while it has weak activity toward peptides with charged C-terminus. May play a role in the inactivation of peptide hormones. May be involved in the regulation of blood pressure through the inactivation of angiotensin II and/or the generation of bradykinin in the kidney.
<b>Cellular Location</b>	Endoplasmic reticulum membrane; Single-pass type II membrane protein
<b>Tissue Location</b>	Ubiquitous.

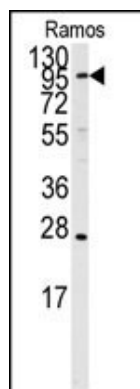
## Background

Aminopeptidases play a role in the metabolism of several peptides that may be involved in blood pressure and the pathogenesis of essential hypertension. Adipocyte-derived leucine aminopeptidase (ALAP) is a member of the M1 family of zinc metallopeptidases.

## References

Goto,Y., Biochem. J. 416 (1), 109-116 (2008)  
 Fruci,D., J. Cell. Physiol. 216 (3), 742-749 (2008)  
 Adamik,B., Biochem. Biophys. Res. Commun. 371 (3), 505-509 (2008)

## Images



Western blot analysis of anti-ARTS1 Antibody (Center) (Cat.#AP7859c) in Ramos cell line lysates (35ug/lane). ARTS1 (arrow) was detected using the purified Pab.

Please note: All products are 'FOR RESEARCH USE ONLY. NOT FOR USE IN DIAGNOSTIC OR THERAPEUTIC PROCEDURES'.