

# PLCG1 Rabbit mAb

Catalog # AP78666

## Product Information

---

<b>Application</b>	WB, IF, ICC, IP
<b>Primary Accession</b>	<a href="#">P19174</a>
<b>Reactivity</b>	Rat, Human, Mouse
<b>Host</b>	Rabbit
<b>Clonality</b>	Monoclonal Antibody
<b>Isotype</b>	IgG
<b>Conjugate</b>	Unconjugated
<b>Immunogen</b>	A synthesized peptide derived from human PLC gamma 1
<b>Purification</b>	Affinity Chromatography
<b>Calculated MW</b>	148532

## Additional Information

---

<b>Gene ID</b>	5335
<b>Other Names</b>	PLCG1
<b>Dilution</b>	WB~~1/500-1/1000 IF~~1:50~200 ICC~~N/A IP~~N/A
<b>Format</b>	Liquid in 10mM PBS, pH 7.4, 150mM sodium chloride, 0.05% BSA, 0.02% sodium azide and 50% glycerol.
<b>Storage</b>	Store at 4°C short term. Aliquot and store at -20°C long term. Avoid freeze/thaw cycles.

## Protein Information

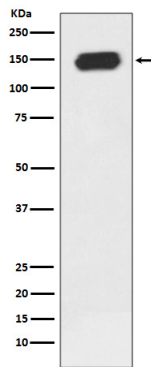
---

<b>Name</b>	PLCG1 ( <a href="#">HGNC:9065</a> )
<b>Synonyms</b>	PLC1
<b>Function</b>	Mediates the production of the second messenger molecules diacylglycerol (DAG) and inositol 1,4,5-trisphosphate (IP3). Plays an important role in the regulation of intracellular signaling cascades. Becomes activated in response to ligand-mediated activation of receptor-type tyrosine kinases, such as PDGFRA, PDGFRB, EGFR, FGFR1, FGFR2, FGFR3 and FGFR4 (By similarity). Plays a role in actin reorganization and cell migration (PubMed: <a href="#">17229814</a> ). Guanine nucleotide exchange factor that binds the GTPase DNM1 and catalyzes the dissociation of GDP, allowing a GTP molecule to bind in its place, therefore enhancing DNM1-dependent endocytosis (By similarity).
<b>Cellular Location</b>	Cell projection, lamellipodium. Cell projection, ruffle. Note=Rapidly redistributed to ruffles and lamellipodia structures in response to epidermal

growth factor (EGF) treatment.

## Images

---



Please note: All products are 'FOR RESEARCH USE ONLY. NOT FOR USE IN DIAGNOSTIC OR THERAPEUTIC PROCEDURES'.