

ARF1 Rabbit mAb

Catalog # AP78671

Product Information

Application	WB, IHC-P, FC
Primary Accession	P84077
Reactivity	Rat, Human, Mouse
Host	Rabbit
Clonality	Monoclonal Antibody
Isotype	IgG
Conjugate	Unconjugated
Immunogen	A synthesized peptide derived from human ARF1
Purification	Affinity Chromatography
Calculated MW	20697

Additional Information

Gene ID	375
Other Names	ARF1
Dilution	WB~~1/500-1/1000 IHC-P~~N/A FC~~1:10~50
Format	Liquid in 10mM PBS, pH 7.4, 150mM sodium chloride, 0.05% BSA, 0.02% sodium azide and 50% glycerol.
Storage	Store at 4°C short term. Aliquot and store at -20°C long term. Avoid freeze/thaw cycles.

Protein Information

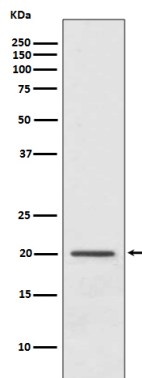
Name	ARF1
Function	<p>Small GTPase involved in protein trafficking between different compartments (PubMed:8253837). Modulates vesicle budding and uncoating within the Golgi complex (PubMed:8253837). In its GTP-bound form, triggers the recruitment of coatamer proteins to the Golgi membrane (PubMed:8253837). The hydrolysis of ARF1-bound GTP, which is mediated by ARFGAPs proteins, is required for dissociation of coat proteins from Golgi membranes and vesicles (PubMed:8253837). The GTP- bound form interacts with PICK1 to limit PICK1-mediated inhibition of Arp2/3 complex activity; the function is linked to AMPA receptor (AMPA) trafficking, regulation of synaptic plasticity of excitatory synapses and spine shrinkage during long-term depression (LTD) (By similarity). Plays a key role in the regulation of intestinal stem cells and gut microbiota, and is essential for maintaining intestinal homeostasis (By similarity). Also plays a critical role in mast cell expansion but not in mast cell maturation by facilitating optimal mTORC1 activation (By</p>

similarity).

Cellular Location

Golgi apparatus membrane; Lipid-anchor; Cytoplasmic side. Synapse, synaptosome {ECO:0000250|UniProtKB:P84079}. Postsynaptic density {ECO:0000250|UniProtKB:P84079}. Note=In the GDP-bound form, associates transiently with the membranes via its myristoylated N-terminus where guanine nucleotide-exchange factor (GEF)-mediated nucleotide exchange occurs (By similarity). Following nucleotide exchange, the GTP-bound form undergoes a conformational change, leading to the exposure of a myristoylated N-terminal amphipathic helix that provides stable membrane anchorage (By similarity). {ECO:0000250|UniProtKB:P84080}

Images



Please note: All products are 'FOR RESEARCH USE ONLY. NOT FOR USE IN DIAGNOSTIC OR THERAPEUTIC PROCEDURES'.