

Mitofusin 2 Rabbit mAb

Catalog # AP78680

Product Information

Application	WB, IHC-P, IF, ICC
Primary Accession	O95140
Reactivity	Rat, Human, Mouse
Host	Rabbit
Clonality	Monoclonal Antibody
Isotype	IgG
Conjugate	Unconjugated
Immunogen	A synthesized peptide derived from human Mitofusin 2
Purification	Affinity Chromatography
Calculated MW	86402

Additional Information

Gene ID	9927
Other Names	MFN2
Dilution	WB~~1/500-1/1000 IHC-P~~N/A IF~~1/50-1/200 ICC~~N/A
Format	Liquid in 10mM PBS, pH 7.4, 150mM sodium chloride, 0.05% BSA, 0.02% sodium azide and 50% glycerol.
Storage	Store at 4°C short term. Aliquot and store at -20°C long term. Avoid freeze/thaw cycles.

Protein Information

Name	MFN2 {ECO:0000303 PubMed:12598526, ECO:0000312 HGNC:HGNC:16877}
Function	Mitochondrial outer membrane GTPase that mediates mitochondrial clustering and fusion (PubMed: 11181170 , PubMed: 11950885 , PubMed: 19889647 , PubMed: 26214738 , PubMed: 28114303). Mitochondria are highly dynamic organelles, and their morphology is determined by the equilibrium between mitochondrial fusion and fission events (PubMed: 28114303). Overexpression induces the formation of mitochondrial networks (PubMed: 28114303). Membrane clustering requires GTPase activity and may involve a major rearrangement of the coiled coil domains (Probable). Plays a central role in mitochondrial metabolism and may be associated with obesity and/or apoptosis processes (By similarity). Plays an important role in the regulation of vascular smooth muscle cell proliferation (By similarity). Involved in the clearance of damaged mitochondria via selective autophagy (mitophagy) (PubMed: 23620051). Is required for PRKN recruitment to dysfunctional mitochondria (PubMed: 23620051). Involved in the control of

unfolded protein response (UPR) upon ER stress including activation of apoptosis and autophagy during ER stress (By similarity). Acts as an upstream regulator of EIF2AK3 and suppresses EIF2AK3 activation under basal conditions (By similarity).

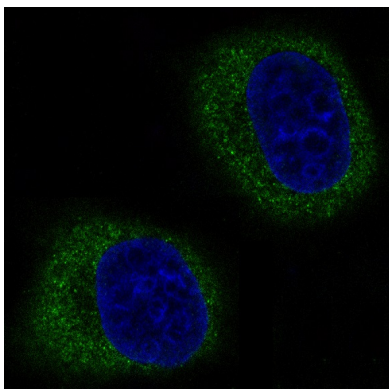
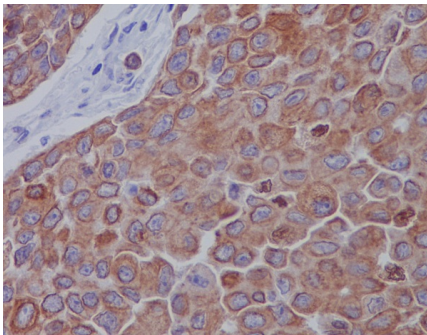
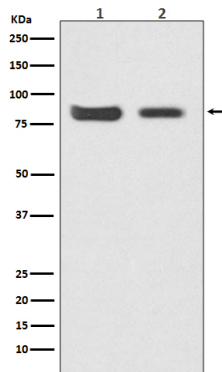
Cellular Location

Mitochondrion outer membrane; Multi-pass membrane protein
Note=Colocalizes with BAX during apoptosis

Tissue Location

Ubiquitous; expressed at low level. Highly expressed in heart and kidney.

Images



Please note: All products are 'FOR RESEARCH USE ONLY. NOT FOR USE IN DIAGNOSTIC OR THERAPEUTIC PROCEDURES'.