

# Bovine Serum Albumin Rabbit mAb

Catalog # AP78682

## Product Information

---

<b>Application</b>	WB, IHC-P
<b>Primary Accession</b>	<a href="#">P02768</a>
<b>Reactivity</b>	Rat, Human, Mouse
<b>Host</b>	Rabbit
<b>Clonality</b>	Monoclonal Antibody
<b>Isotype</b>	IgG
<b>Conjugate</b>	Unconjugated
<b>Immunogen</b>	A synthesized peptide derived from Cow Bovine Serum Albumin
<b>Purification</b>	Affinity Chromatography
<b>Calculated MW</b>	69367

## Additional Information

---

<b>Gene ID</b>	213
<b>Other Names</b>	Alb
<b>Dilution</b>	WB~~1/500-1/1000 IHC-P~~N/A
<b>Format</b>	Liquid in 10mM PBS, pH 7.4, 150mM sodium chloride, 0.05% BSA, 0.02% sodium azide and 50% glycerol.
<b>Storage</b>	Store at 4°C short term. Aliquot and store at -20°C long term. Avoid freeze/thaw cycles.

## Protein Information

---

<b>Name</b>	ALB
<b>Function</b>	Binds water, Ca(2+), Na(+), K(+), fatty acids, hormones, bilirubin and drugs (Probable). Its main function is the regulation of the colloidal osmotic pressure of blood (Probable). Major zinc transporter in plasma, typically binds about 80% of all plasma zinc (PubMed: <a href="#">19021548</a> ). Major calcium and magnesium transporter in plasma, binds approximately 45% of circulating calcium and magnesium in plasma (By similarity). Potentially has more than two calcium-binding sites and might additionally bind calcium in a non-specific manner (By similarity). The shared binding site between zinc and calcium at residue Asp-273 suggests a crosstalk between zinc and calcium transport in the blood (By similarity). The rank order of affinity is zinc > calcium > magnesium (By similarity). Binds to the bacterial siderophore enterobactin and inhibits enterobactin-mediated iron uptake of E.coli from ferric transferrin, and may thereby limit the utilization of iron and growth of enteric bacteria such as E.coli (PubMed: <a href="#">6234017</a> ). Does not prevent iron

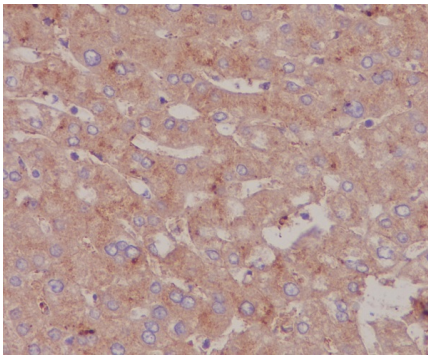
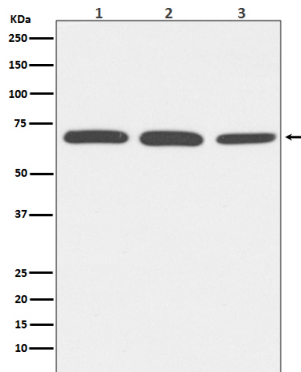
uptake by the bacterial siderophore aerobactin (PubMed:[6234017](#)).

**Cellular Location** Secreted.

**Tissue Location** Plasma.

## Images

---



Please note: All products are 'FOR RESEARCH USE ONLY. NOT FOR USE IN DIAGNOSTIC OR THERAPEUTIC PROCEDURES'.