

CDT1 Rabbit mAb

Catalog # AP78688

Product Information

Application	WB, IHC-P, IF, ICC, IP
Primary Accession	Q9H211
Reactivity	Human
Host	Rabbit
Clonality	Monoclonal Antibody
Isotype	IgG
Conjugate	Unconjugated
Immunogen	A synthesized peptide derived from human CDT1
Purification	Affinity Chromatography
Calculated MW	60390

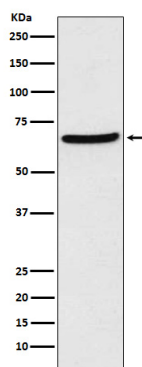
Additional Information

Gene ID	81620
Other Names	CDT1
Dilution	WB~~1/500-1/1000 IHC-P~~N/A IF~~1:50~200 ICC~~N/A IP~~N/A
Format	Liquid in 10mM PBS, pH 7.4, 150mM sodium chloride, 0.05% BSA, 0.02% sodium azide and 50% glycerol.
Storage	Store at 4°C short term. Aliquot and store at -20°C long term. Avoid freeze/thaw cycles.

Protein Information

Name	CDT1 {ECO:0000312 EMBL:AAG45181.1}
Function	Required for both DNA replication and mitosis (PubMed: 11125146 , PubMed: 14993212 , PubMed: 21856198 , PubMed: 22581055 , PubMed: 26842564). DNA replication licensing factor, required for pre-replication complex assembly. Cooperates with CDC6 and the origin recognition complex (ORC) during G1 phase of the cell cycle to promote the loading of the mini-chromosome maintenance (MCM) complex onto DNA to generate pre-replication complexes (pre-RC) (PubMed: 14672932). Required also for mitosis by promoting stable kinetochore-microtubule attachments (PubMed: 22581055). Potential oncogene (By similarity).
Cellular Location	Nucleus. Chromosome, centromere, kinetochore. Note=Transiently localizes to kinetochores during prometaphase and metaphase

Images



Please note: All products are 'FOR RESEARCH USE ONLY. NOT FOR USE IN DIAGNOSTIC OR THERAPEUTIC PROCEDURES'.