

BNP Rabbit mAb

Catalog # AP78690

Product Information

Application	WB
Primary Accession	P16860
Reactivity	Human
Host	Rabbit
Clonality	Monoclonal Antibody
Isotype	IgG
Conjugate	Unconjugated
Immunogen	A synthesized peptide derived from human BNP
Purification	Affinity Chromatography
Calculated MW	14726

Additional Information

Gene ID	4879
Other Names	NPPB
Dilution	WB~~1/500-1/1000
Format	Liquid in 10mM PBS, pH 7.4, 150mM sodium chloride, 0.05% BSA, 0.02% sodium azide and 50% glycerol.
Storage	Store at 4°C short term. Aliquot and store at -20°C long term. Avoid freeze/thaw cycles.

Protein Information

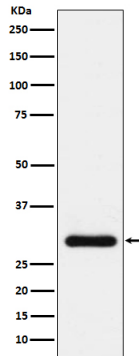
Name	NPPB
Function	[Brain natriuretic peptide 32]: Cardiac hormone that plays a key role in mediating cardio-renal homeostasis (PubMed: 1672777 , PubMed: 17372040 , PubMed: 1914098 , PubMed: 9458824). May also function as a paracrine antifibrotic factor in the heart (By similarity). Acts by specifically binding and stimulating NPR1 to produce cGMP, which in turn activates effector proteins that drive various biological responses (PubMed: 1672777 , PubMed: 17349887 , PubMed: 17372040 , PubMed: 21098034 , PubMed: 25339504 , PubMed: 9458824). Involved in regulating the extracellular fluid volume and maintaining the fluid- electrolyte balance through natriuresis, diuresis, vasorelaxation, and inhibition of renin and aldosterone secretion (PubMed: 1914098 , PubMed: 9458824). Binds the clearance receptor NPR3 (PubMed: 16870210).
Cellular Location	[NT-proBNP]: Secreted Note=Detected in blood. [Brain natriuretic peptide 32]:

Secreted. Note=Detected in blood.

Tissue Location

[Brain natriuretic peptide 32]: Detected in the cardiac atria (at protein level) (PubMed:2136732, PubMed:2138890) Detected in the kidney distal tubular cells (at protein level) (PubMed:9794555).

Images



Please note: All products are 'FOR RESEARCH USE ONLY. NOT FOR USE IN DIAGNOSTIC OR THERAPEUTIC PROCEDURES'.