

Ferritin Light Chain Rabbit mAb

Catalog # AP78691

Product Information

Application	WB, FC, IP
Primary Accession	P02792
Reactivity	Rat, Human, Mouse
Host	Rabbit
Clonality	Monoclonal Antibody
Isotype	IgG
Conjugate	Unconjugated
Immunogen	A synthesized peptide derived from human Ferritin Light Chain
Purification	Affinity Chromatography
Calculated MW	20020

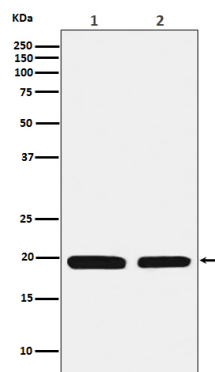
Additional Information

Gene ID	2512
Other Names	FTL
Dilution	WB~~1/500-1/1000 FC~~1:10~50 IP~~N/A
Format	Liquid in 10mM PBS, pH 7.4, 150mM sodium chloride, 0.05% BSA, 0.02% sodium azide and 50% glycerol.
Storage	Store at 4°C short term. Aliquot and store at -20°C long term. Avoid freeze/thaw cycles.

Protein Information

Name	FTL
Function	Stores iron in a soluble, non-toxic, readily available form. Important for iron homeostasis. Iron is taken up in the ferrous form and deposited as ferric hydroxides after oxidation. Also plays a role in delivery of iron to cells. Mediates iron uptake in capsule cells of the developing kidney (By similarity). Delivery to lysosomes by the cargo receptor NCOA4 for autophagic degradation and release of iron (PubMed: 24695223).
Cellular Location	Cytoplasmic vesicle, autophagosome. Cytoplasm {ECO:0000250 UniProtKB:P29391}. Autolysosome {ECO:0000250 UniProtKB:P29391}

Images



Please note: All products are 'FOR RESEARCH USE ONLY. NOT FOR USE IN DIAGNOSTIC OR THERAPEUTIC PROCEDURES'.