

ESRRG Antibody (Center)

Purified Rabbit Polyclonal Antibody (Pab)

Catalog # AP7870c

Product Information

Application	WB, E
Primary Accession	P62508
Other Accession	P62510 , P62509
Reactivity	Human, Rat, Mouse
Predicted	Rat
Host	Rabbit
Clonality	Polyclonal
Isotype	Rabbit IgG
Calculated MW	51306
Antigen Region	189-221

Additional Information

Gene ID	2104
Other Names	Estrogen-related receptor gamma, ERR gamma-2, Estrogen receptor-related protein 3, Nuclear receptor subfamily 3 group B member 3, ESRRG, ERR3, ERRG2, KIAA0832, NR3B3
Target/Specificity	This ESRRG antibody is generated from rabbits immunized with a KLH conjugated synthetic peptide between 189-221 amino acids from the Central region of human ESRRG.
Dilution	WB~~1:1000 E~~Use at an assay dependent concentration.
Format	Purified polyclonal antibody supplied in PBS with 0.09% (W/V) sodium azide. This antibody is prepared by Saturated Ammonium Sulfate (SAS) precipitation followed by dialysis against PBS.
Storage	Maintain refrigerated at 2-8°C for up to 2 weeks. For long term storage store at -20°C in small aliquots to prevent freeze-thaw cycles.
Precautions	ESRRG Antibody (Center) is for research use only and not for use in diagnostic or therapeutic procedures.

Protein Information

Name	ESRRG
Synonyms	ERR3, ERRG2, KIAA0832, NR3B3

Function	Orphan receptor that acts as a transcription activator in the absence of bound ligand. Binds specifically to an estrogen response element and activates reporter genes controlled by estrogen response elements (By similarity). Induces the expression of PERM1 in the skeletal muscle.
Cellular Location	Nucleus.
Tissue Location	Expressed in the heart, kidney, brain, lung, bone marrow, adrenal gland, trachea, spinal cord and thyroid gland

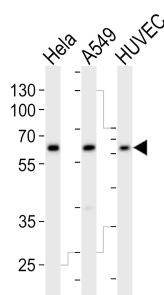
Background

ESRRG is an orphan receptor that acts as transcription activator in the absence of bound ligand. This protein binds specifically to an estrogen response element and activates reporter genes controlled by estrogen response elements.

References

Chen F., Zhang Q., McDonald T. *Gene* 228:101-109(1999)
 Heard D.J., Norby P.L. *Mol. Endocrinol.* 14:382-392(2000)
 Hong H., Yang L., Stallcup M.R. *J. Biol. Chem.* 274:22618-22626(1999)

Images



Western blot analysis of lysates from HeLa, A549, HUVEC cell line (from left to right), using ESRRG Antibody (Center)(Cat. #AP7870c). AP7870c was diluted at 1:1000 at each lane. A goat anti-rabbit IgG H&L(HRP) at 1:10000 dilution was used as the secondary antibody. Lysates at 20ug per lane.

Please note: All products are 'FOR RESEARCH USE ONLY. NOT FOR USE IN DIAGNOSTIC OR THERAPEUTIC PROCEDURES'.