

# IL-8 Rabbit mAb

Catalog # AP78733

## Product Information

---

<b>Application</b>	WB
<b>Primary Accession</b>	<a href="#">P10145</a>
<b>Reactivity</b>	Human
<b>Host</b>	Rabbit
<b>Clonality</b>	Monoclonal Antibody
<b>Isotype</b>	IgG
<b>Conjugate</b>	Unconjugated
<b>Immunogen</b>	A synthesized peptide derived from human IL8
<b>Purification</b>	Affinity Chromatography
<b>Calculated MW</b>	11098

## Additional Information

---

<b>Gene ID</b>	3576
<b>Other Names</b>	CXCL8
<b>Dilution</b>	WB~~1/500-1/1000
<b>Format</b>	Liquid in 10mM PBS, pH 7.4, 150mM sodium chloride, 0.05% BSA, 0.02% sodium azide and 50% glycerol.
<b>Storage</b>	Store at 4°C short term. Aliquot and store at -20°C long term. Avoid freeze/thaw cycles.

## Protein Information

---

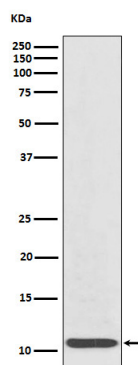
<b>Name</b>	CXCL8
<b>Synonyms</b>	IL8
<b>Function</b>	Chemotactic factor that mediates inflammatory response by attracting neutrophils, basophils, and T-cells to clear pathogens and protect the host from infection (PubMed: <a href="#">18692776</a> , PubMed: <a href="#">7636208</a> ). Also plays an important role in neutrophil activation (PubMed: <a href="#">2145175</a> , PubMed: <a href="#">9623510</a> ). Released in response to an inflammatory stimulus, exerts its effect by binding to the G-protein-coupled receptors CXCR1 and CXCR2, primarily found in neutrophils, monocytes and endothelial cells (PubMed: <a href="#">1840701</a> , PubMed: <a href="#">1891716</a> ). G-protein heterotrimer (alpha, beta, gamma subunits) constitutively binds to CXCR1/CXCR2 receptor and activation by IL8 leads to beta and gamma subunits release from Galpha (GNAI2 in neutrophils) and activation of several downstream signaling pathways including PI3K and MAPK pathways (PubMed: <a href="#">11971003</a> , PubMed: <a href="#">8662698</a> ).

Cellular Location

Secreted.

## Images

---



Please note: All products are 'FOR RESEARCH USE ONLY. NOT FOR USE IN DIAGNOSTIC OR THERAPEUTIC PROCEDURES'.