

NCS1 Rabbit mAb

Catalog # AP78734

Product Information

Application	WB, IHC-P, FC
Primary Accession	P62166
Reactivity	Rat, Human, Mouse
Host	Rabbit
Clonality	Monoclonal Antibody
Isotype	IgG
Conjugate	Unconjugated
Immunogen	A synthesized peptide derived from human NCS1
Purification	Affinity Chromatography
Calculated MW	21879

Additional Information

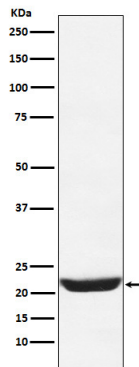
Gene ID	23413
Other Names	NCS1
Dilution	WB~~1/500-1/1000 IHC-P~~N/A FC~~1:10~50
Format	Liquid in 10mM PBS, pH 7.4, 150mM sodium chloride, 0.05% BSA, 0.02% sodium azide and 50% glycerol.
Storage	Store at 4°C short term. Aliquot and store at -20°C long term. Avoid freeze/thaw cycles.

Protein Information

Name	NCS1
Synonyms	FLUP, FREQ
Function	Neuronal calcium sensor, regulator of G protein-coupled receptor phosphorylation in a calcium dependent manner. Directly regulates GRK1 (RHOK), but not GRK2 to GRK5. Can substitute for calmodulin (By similarity). Stimulates PI4KB kinase activity (By similarity). Involved in long-term synaptic plasticity through its interaction with PICK1 (By similarity). May also play a role in neuron differentiation through inhibition of the activity of N-type voltage- gated calcium channel (By similarity).
Cellular Location	Golgi apparatus. Postsynaptic density. Cytoplasm, perinuclear region. Cytoplasm {ECO:0000250 UniProtKB:P62168}. Cell membrane; Peripheral membrane protein. Membrane {ECO:0000250 UniProtKB:P62168}; Lipid-anchor Note=Associated with Golgi stacks. Post-synaptic densities of

dendrites, and in the pre-synaptic nerve terminal at neuromuscular junctions.
{ECO:0000305, ECO:0000305 | PubMed:17555535}

Images



Please note: All products are 'FOR RESEARCH USE ONLY. NOT FOR USE IN DIAGNOSTIC OR THERAPEUTIC PROCEDURES'.