

Olig3 Rabbit mAb

Catalog # AP78735

Product Information

Application	WB, IF, ICC
Primary Accession	Q7RTU3
Reactivity	Human
Host	Rabbit
Clonality	Monoclonal Antibody
Isotype	IgG
Conjugate	Unconjugated
Immunogen	A synthesized peptide derived from human Olig3
Purification	Affinity Chromatography
Calculated MW	29358

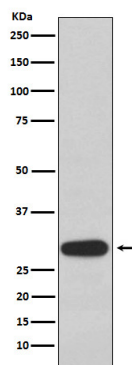
Additional Information

Gene ID	167826
Other Names	OLIG3
Dilution	WB~~1/500-1/1000 IF~~1:50~200 ICC~~N/A
Format	Liquid in 10mM PBS, pH 7.4, 150mM sodium chloride, 0.05% BSA, 0.02% sodium azide and 50% glycerol.
Storage	Store at 4°C short term. Aliquot and store at -20°C long term. Avoid freeze/thaw cycles.

Protein Information

Name	OLIG3
Synonyms	BHLHB7, BHLHE20
Function	May determine the distinct specification program of class A neurons in the dorsal part of the spinal cord and suppress specification of class B neurons.
Cellular Location	Nucleus {ECO:0000255 PROSITE-ProRule:PRU00981}.

Images



Please note: All products are 'FOR RESEARCH USE ONLY. NOT FOR USE IN DIAGNOSTIC OR THERAPEUTIC PROCEDURES'.