

# UBE4A Rabbit mAb

Catalog # AP78743

## Product Information

---

<b>Application</b>	WB, IF, FC, ICC
<b>Primary Accession</b>	<a href="#">Q14139</a>
<b>Reactivity</b>	Human
<b>Host</b>	Rabbit
<b>Clonality</b>	Monoclonal Antibody
<b>Isotype</b>	IgG
<b>Conjugate</b>	Unconjugated
<b>Immunogen</b>	A synthesized peptide derived from human UBE4A
<b>Purification</b>	Affinity Chromatography
<b>Calculated MW</b>	122561

## Additional Information

---

<b>Gene ID</b>	9354
<b>Other Names</b>	UBE4A
<b>Dilution</b>	WB~~1/500-1/1000 IF~~1:50~200 FC~~1:10~50 ICC~~N/A
<b>Format</b>	Liquid in 10mM PBS, pH 7.4, 150mM sodium chloride, 0.05% BSA, 0.02% sodium azide and 50% glycerol.
<b>Storage</b>	Store at 4°C short term. Aliquot and store at -20°C long term. Avoid freeze/thaw cycles.

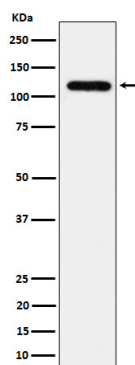
## Protein Information

---

<b>Name</b>	UBE4A ( <a href="#">HGNC:12499</a> )
<b>Function</b>	Ubiquitin-protein ligase that probably functions as an E3 ligase in conjunction with specific E1 and E2 ligases. May also function as an E4 ligase mediating the assembly of polyubiquitin chains on substrates ubiquitinated by another E3 ubiquitin ligase. Mediates 'Lys-48'-linked polyubiquitination of substrates.
<b>Cellular Location</b>	Cytoplasm {ECO:0000250 UniProtKB:E9Q735}.

## Images

---



Please note: All products are 'FOR RESEARCH USE ONLY. NOT FOR USE IN DIAGNOSTIC OR THERAPEUTIC PROCEDURES'.