

# HDGF Rabbit mAb

Catalog # AP78746

## Product Information

---

<b>Application</b>	WB, IHC-P, IF, FC, ICC
<b>Primary Accession</b>	<a href="#">P51858</a>
<b>Reactivity</b>	Human, Mouse
<b>Host</b>	Rabbit
<b>Clonality</b>	Monoclonal Antibody
<b>Isotype</b>	IgG
<b>Conjugate</b>	Unconjugated
<b>Immunogen</b>	A synthesized peptide derived from human HDGF
<b>Purification</b>	Affinity Chromatography
<b>Calculated MW</b>	26788

## Additional Information

---

<b>Gene ID</b>	3068
<b>Other Names</b>	HDGF
<b>Dilution</b>	WB~~1/500-1/1000 IHC-P~~N/A IF~~1:50~200 FC~~1:10~50 ICC~~N/A
<b>Format</b>	Liquid in 10mM PBS, pH 7.4, 150mM sodium chloride, 0.05% BSA, 0.02% sodium azide and 50% glycerol.
<b>Storage</b>	Store at 4°C short term. Aliquot and store at -20°C long term. Avoid freeze/thaw cycles.

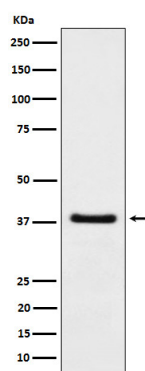
## Protein Information

---

<b>Name</b>	HDGF
<b>Synonyms</b>	HMG1L2
<b>Function</b>	[Isoform 1]: Acts as a transcriptional repressor (PubMed: <a href="#">17974029</a> ). Has mitogenic activity for fibroblasts (PubMed: <a href="#">11751870</a> , PubMed: <a href="#">26845719</a> ). Heparin-binding protein (PubMed: <a href="#">15491618</a> ).
<b>Cellular Location</b>	[Isoform 1]: Nucleus. Cytoplasm. Secreted, extracellular exosome. Note=Secreted by exosomes and is located inside the exosome (PubMed:27926477). May also be secreted as free protein via an as yet unknown pathway (PubMed:27926477) [Isoform 3]: Nucleus. Cytoplasm Secreted, extracellular exosome Note=Secreted by exosomes and is located on the outer exosome surface
<b>Tissue Location</b>	Ubiquitous..

## Images

---



Please note: All products are 'FOR RESEARCH USE ONLY. NOT FOR USE IN DIAGNOSTIC OR THERAPEUTIC PROCEDURES'.