

SRP19 Rabbit mAb

Catalog # AP78774

Product Information

Application	WB, IHC-P, IF, ICC
Primary Accession	P09132
Reactivity	Rat, Human, Mouse
Host	Rabbit
Clonality	Monoclonal Antibody
Isotype	IgG
Conjugate	Unconjugated
Immunogen	A synthesized peptide derived from human SRP19
Purification	Affinity Chromatography
Calculated MW	16156

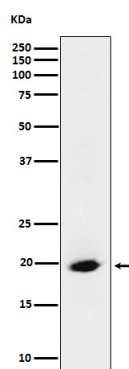
Additional Information

Gene ID	6728
Other Names	SRP19
Dilution	WB~~1/500-1/1000 IHC-P~~N/A IF~~1:50~200 ICC~~N/A
Format	Liquid in 10mM PBS, pH 7.4, 150mM sodium chloride, 0.05% BSA, 0.02% sodium azide and 50% glycerol.
Storage	Store at 4°C short term. Aliquot and store at -20°C long term. Avoid freeze/thaw cycles.

Protein Information

Name	SRP19
Function	Component of the signal recognition particle (SRP) complex, a ribonucleoprotein complex that mediates the cotranslational targeting of secretory and membrane proteins to the endoplasmic reticulum (ER) (By similarity). Binds directly to 7SL RNA (By similarity). Mediates binding of SRP54 to the SRP complex (By similarity).
Cellular Location	Cytoplasm. Nucleus, nucleolus. Nucleus, nucleoplasm. Note=Although the signal recognition particle complex acts in the cytoplasm, it assembles at least in part in the nucleus and/or the nucleolus. SRP19 nuclear import may be mediated by IPO8/Imp8 and TPNO1/Trn

Images



Please note: All products are 'FOR RESEARCH USE ONLY. NOT FOR USE IN DIAGNOSTIC OR THERAPEUTIC PROCEDURES'.