

# SAMM50 Rabbit mAb

Catalog # AP78789

## Product Information

---

<b>Application</b>	WB, IHC-P
<b>Primary Accession</b>	<a href="#">Q9Y512</a>
<b>Reactivity</b>	Human
<b>Host</b>	Rabbit
<b>Clonality</b>	Monoclonal Antibody
<b>Isotype</b>	IgG
<b>Conjugate</b>	Unconjugated
<b>Immunogen</b>	A synthesized peptide derived from human SAMM50
<b>Purification</b>	Affinity Chromatography
<b>Calculated MW</b>	51976

## Additional Information

---

<b>Gene ID</b>	25813
<b>Other Names</b>	SAMM50
<b>Dilution</b>	WB~~1/500-1/1000 IHC-P~~N/A
<b>Format</b>	Liquid in 10mM PBS, pH 7.4, 150mM sodium chloride, 0.05% BSA, 0.02% sodium azide and 50% glycerol.
<b>Storage</b>	Store at 4°C short term. Aliquot and store at -20°C long term. Avoid freeze/thaw cycles.

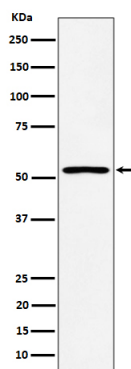
## Protein Information

---

<b>Name</b>	SAMM50
<b>Synonyms</b>	SAM50
<b>Function</b>	Plays a crucial role in the maintenance of the structure of mitochondrial cristae and the proper assembly of the mitochondrial respiratory chain complexes (PubMed: <a href="#">22252321</a> , PubMed: <a href="#">25781180</a> ). Required for the assembly of TOMM40 into the TOM complex (PubMed: <a href="#">15644312</a> ).
<b>Cellular Location</b>	Mitochondrion outer membrane; Multi-pass membrane protein. Cytoplasm {ECO:0000250 UniProtKB:Q6AXV4}. Mitochondrion

## Images

---



Please note: All products are 'FOR RESEARCH USE ONLY. NOT FOR USE IN DIAGNOSTIC OR THERAPEUTIC PROCEDURES'.