

PPM1E Rabbit mAb

Catalog # AP78793

Product Information

Application	WB, FC
Primary Accession	Q8WY54
Reactivity	Human
Host	Rabbit
Clonality	Monoclonal Antibody
Isotype	IgG
Conjugate	Unconjugated
Immunogen	A synthesized peptide derived from human PPM1E
Purification	Affinity Chromatography
Calculated MW	83952

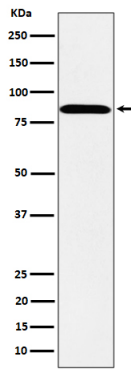
Additional Information

Gene ID	22843
Other Names	PPM1E
Dilution	WB~~1/500-1/1000 FC~~1:10~50
Format	Liquid in 10mM PBS, pH 7.4, 150mM sodium chloride, 0.05% BSA, 0.02% sodium azide and 50% glycerol.
Storage	Store at 4°C short term. Aliquot and store at -20°C long term. Avoid freeze/thaw cycles.

Protein Information

Name	PPM1E
Synonyms	CAMKN, KIAA1072, POPX1
Function	Protein phosphatase that inactivates multifunctional CaM kinases such as CAMK4 and CAMK2 (By similarity). Dephosphorylates and inactivates PAK. May play a role in the inhibition of actin fiber stress breakdown and in morphological changes driven by TNK2/CDC42. Dephosphorylates PRKAA2 (By similarity).
Cellular Location	Nucleus. Cytoplasm. Note=A truncated form, major form, with the C-terminal part missing, is mostly found in the cytoplasm and a little in the nucleus. The full-length, minor form, is found in the nucleus.

Images



Please note: All products are 'FOR RESEARCH USE ONLY. NOT FOR USE IN DIAGNOSTIC OR THERAPEUTIC PROCEDURES'.