

# C1s Rabbit mAb

Catalog # AP78796

## Product Information

Application	WB, IHC-P, IP
Primary Accession	<a href="#">P09871</a>
Reactivity	Human
Host	Rabbit
Clonality	Monoclonal Antibody
Isotype	IgG
Conjugate	Unconjugated
Immunogen	A synthesized peptide derived from human C1s
Purification	Affinity Chromatography
Calculated MW	76684

## Additional Information

Gene ID	716
Other Names	C1S
Dilution	WB~~1/500-1/1000 IHC-P~~N/A IP~~N/A
Format	Liquid in 10mM PBS, pH 7.4, 150mM sodium chloride, 0.05% BSA, 0.02% sodium azide and 50% glycerol.
Storage	Store at 4°C short term. Aliquot and store at -20°C long term. Avoid freeze/thaw cycles.

## Protein Information

Name	C1S {ECO:0000303   PubMed:3500856, ECO:0000312   HGNC:HGNC:1247}
Function	<p>Component of the complement C1 complex, a multiprotein complex that initiates the classical pathway of the complement system, a cascade of proteins that leads to phagocytosis and breakdown of pathogens and signaling that strengthens the adaptive immune system (PubMed:<a href="#">11445589</a>, PubMed:<a href="#">16169853</a>, PubMed:<a href="#">417728</a>, PubMed:<a href="#">467643</a>, PubMed:<a href="#">6271784</a>, PubMed:<a href="#">6282646</a>, PubMed:<a href="#">6319179</a>, PubMed:<a href="#">70787</a>, PubMed:<a href="#">9422791</a>). C1S is activated following association of the C1 complex with immunoglobulins (IgG or IgM) complexed with antigens to form antigen-antibody complexes on the surface of pathogens (PubMed:<a href="#">34155115</a>). C1S is cleaved and activated by C1R to generate C1s subcomponent heavy and light chains (PubMed:<a href="#">11445589</a>, PubMed:<a href="#">6271784</a>). C1s subcomponent light chain then cleaves and activates C2 and C4, the next components of the classical complement pathway (PubMed:<a href="#">16169853</a>, PubMed:<a href="#">467643</a>, PubMed:<a href="#">6282646</a>, PubMed:<a href="#">6319179</a>, PubMed:<a href="#">6906228</a>, PubMed:<a href="#">70787</a>,</p>

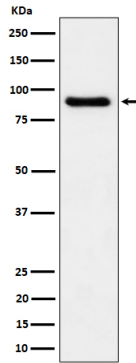
PubMed:[9422791](#)).

## Cellular Location

Secreted. Cell surface. Note=Recruited to the surface of pathogens by the C1Q subcomplex.

## Images

---



Please note: All products are 'FOR RESEARCH USE ONLY. NOT FOR USE IN DIAGNOSTIC OR THERAPEUTIC PROCEDURES'.