

Somatostatin Receptor 1 Rabbit mAb

Catalog # AP78806

Product Information

Application	WB, IF, ICC
Primary Accession	P30872
Reactivity	Human
Host	Rabbit
Clonality	Monoclonal Antibody
Isotype	IgG
Conjugate	Unconjugated
Immunogen	A synthesized peptide derived from human Somatostatin Receptor 1
Purification	Affinity Chromatography
Calculated MW	42686

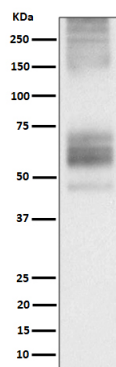
Additional Information

Gene ID	6751
Other Names	SSTR1
Dilution	WB~~1/500-1/1000 IF~~1:50~200 ICC~~N/A
Format	Liquid in 10mM PBS, pH 7.4, 150mM sodium chloride, 0.05% BSA, 0.02% sodium azide and 50% glycerol.
Storage	Store at 4°C short term. Aliquot and store at -20°C long term. Avoid freeze/thaw cycles.

Protein Information

Name	SSTR1
Function	Receptor for somatostatin with higher affinity for somatostatin-14 than -28. This receptor is coupled via pertussis toxin sensitive G proteins to inhibition of adenylyl cyclase. In addition it stimulates phosphotyrosine phosphatase and Na(+)/H(+) exchanger via pertussis toxin insensitive G proteins.
Cellular Location	Cell membrane; Multi-pass membrane protein.
Tissue Location	Fetal kidney, fetal liver, and adult pancreas, brain, lung, jejunum and stomach

Images



Please note: All products are 'FOR RESEARCH USE ONLY. NOT FOR USE IN DIAGNOSTIC OR THERAPEUTIC PROCEDURES'.