

RPL13 Rabbit mAb

Catalog # AP78808

Product Information

Application	WB, IHC-P, IF, ICC
Primary Accession	P26373
Reactivity	Human, Mouse
Host	Rabbit
Clonality	Monoclonal Antibody
Isotype	IgG
Conjugate	Unconjugated
Immunogen	A synthesized peptide derived from human RPL13
Purification	Affinity Chromatography
Calculated MW	24261

Additional Information

Gene ID	6137
Other Names	RPL13
Dilution	WB~~1/500-1/1000 IHC-P~~N/A IF~~1:50~200 ICC~~N/A
Format	Liquid in 10mM PBS, pH 7.4, 150mM sodium chloride, 0.05% BSA, 0.02% sodium azide and 50% glycerol.
Storage	Store at 4°C short term. Aliquot and store at -20°C long term. Avoid freeze/thaw cycles.

Protein Information

Name	RPL13
Synonyms	BBC1
Function	Component of the ribosome, a large ribonucleoprotein complex responsible for the synthesis of proteins in the cell (PubMed: 23636399 , PubMed: 31630789 , PubMed: 32669547). The small ribosomal subunit (SSU) binds messenger RNAs (mRNAs) and translates the encoded message by selecting cognate aminoacyl-transfer RNA (tRNA) molecules (Probable). The large subunit (LSU) contains the ribosomal catalytic site termed the peptidyl transferase center (PTC), which catalyzes the formation of peptide bonds, thereby polymerizing the amino acids delivered by tRNAs into a polypeptide chain (Probable). The nascent polypeptides leave the ribosome through a tunnel in the LSU and interact with protein factors that function in enzymatic processing, targeting, and the membrane insertion of nascent chains at the exit of the ribosomal tunnel (Probable). As part of the LSU, it is probably

required for its formation and the maturation of rRNAs (PubMed:[31630789](#)).
Plays a role in bone development (PubMed:[31630789](#)).

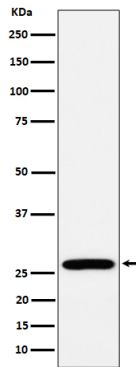
Cellular Location

Cytoplasm

Tissue Location

Higher levels of expression in benign breast lesions than in carcinomas.

Images



Please note: All products are 'FOR RESEARCH USE ONLY. NOT FOR USE IN DIAGNOSTIC OR THERAPEUTIC PROCEDURES'.