

NIF3L1 Rabbit mAb

Catalog # AP78819

Product Information

Application	WB, IF, ICC
Primary Accession	Q9GZT8
Reactivity	Human
Host	Rabbit
Clonality	Monoclonal Antibody
Isotype	IgG
Conjugate	Unconjugated
Immunogen	A synthesized peptide derived from human ALS2CR1
Purification	Affinity Chromatography
Calculated MW	41968

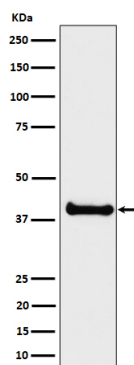
Additional Information

Gene ID	60491
Other Names	NIF3L1
Dilution	WB~~1/500-1/1000 IF~~1:50~200 ICC~~N/A
Format	Liquid in 10mM PBS, pH 7.4, 150mM sodium chloride, 0.05% BSA, 0.02% sodium azide and 50% glycerol.
Storage	Store at 4°C short term. Aliquot and store at -20°C long term. Avoid freeze/thaw cycles.

Protein Information

Name	NIF3L1 (HGNC:13390)
Function	May function as a transcriptional corepressor through its interaction with COPS2, negatively regulating the expression of genes involved in neuronal differentiation.
Cellular Location	Cytoplasm. Nucleus {ECO:0000250 UniProtKB:Q9EQ80} Note=Interaction with COPS2 may regulate localization to the nucleus {ECO:0000250 UniProtKB:Q9EQ80}

Images



Please note: All products are 'FOR RESEARCH USE ONLY. NOT FOR USE IN DIAGNOSTIC OR THERAPEUTIC PROCEDURES'.