

CSF2RA Rabbit mAb

Catalog # AP78844

Product Information

Application	WB
Primary Accession	P15509
Reactivity	Human
Host	Rabbit
Clonality	Monoclonal Antibody
Isotype	IgG
Conjugate	Unconjugated
Immunogen	A synthesized peptide derived from human CD116
Purification	Affinity Chromatography
Calculated MW	46207

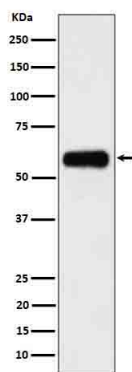
Additional Information

Gene ID	1438
Other Names	CSF2RA
Dilution	WB~~1/500-1/1000
Format	Liquid in 10mM PBS, pH 7.4, 150mM sodium chloride, 0.05% BSA, 0.02% sodium azide and 50% glycerol.
Storage	Store at 4°C short term. Aliquot and store at -20°C long term. Avoid freeze/thaw cycles.

Protein Information

Name	CSF2RA
Synonyms	CSF2R, CSF2RY
Function	Low affinity receptor for granulocyte-macrophage colony- stimulating factor. Transduces a signal that results in the proliferation, differentiation, and functional activation of hematopoietic cells.
Cellular Location	Cell membrane; Single-pass type I membrane protein [Isoform 4]; Secreted.

Images



Please note: All products are 'FOR RESEARCH USE ONLY. NOT FOR USE IN DIAGNOSTIC OR THERAPEUTIC PROCEDURES'.