

# GAS2 Rabbit mAb

Catalog # AP78848

## Product Information

---

|                          |                                               |
|--------------------------|-----------------------------------------------|
| <b>Application</b>       | WB, IHC-P                                     |
| <b>Primary Accession</b> | <a href="#">O43903</a>                        |
| <b>Reactivity</b>        | Human                                         |
| <b>Host</b>              | Rabbit                                        |
| <b>Clonality</b>         | Monoclonal Antibody                           |
| <b>Isotype</b>           | IgG                                           |
| <b>Conjugate</b>         | Unconjugated                                  |
| <b>Immunogen</b>         | A synthesized peptide derived from human GAS2 |
| <b>Purification</b>      | Affinity Chromatography                       |
| <b>Calculated MW</b>     | 34945                                         |

## Additional Information

---

|                    |                                                                                                    |
|--------------------|----------------------------------------------------------------------------------------------------|
| <b>Gene ID</b>     | 2620                                                                                               |
| <b>Other Names</b> | GAS2                                                                                               |
| <b>Dilution</b>    | WB~~1/500-1/1000 IHC-P~~N/A                                                                        |
| <b>Format</b>      | Liquid in 10mM PBS, pH 7.4, 150mM sodium chloride, 0.05% BSA, 0.02% sodium azide and 50% glycerol. |
| <b>Storage</b>     | Store at 4°C short term. Aliquot and store at -20°C long term. Avoid freeze/thaw cycles.           |

## Protein Information

---

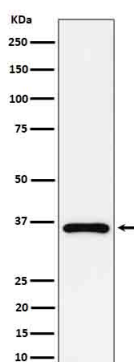
|                          |                                                                                                                                                                                                                                                                                                                                                                                                                                                                                                                                                                                |
|--------------------------|--------------------------------------------------------------------------------------------------------------------------------------------------------------------------------------------------------------------------------------------------------------------------------------------------------------------------------------------------------------------------------------------------------------------------------------------------------------------------------------------------------------------------------------------------------------------------------|
| <b>Name</b>              | GAS2                                                                                                                                                                                                                                                                                                                                                                                                                                                                                                                                                                           |
| <b>Function</b>          | Required to maintain microtubule bundles in inner ear supporting cells, affording them with mechanical stiffness to transmit sound energy through the cochlea.                                                                                                                                                                                                                                                                                                                                                                                                                 |
| <b>Cellular Location</b> | Cytoplasm, cytoskeleton, stress fiber. Membrane {ECO:0000250 UniProtKB:P11862}; Peripheral membrane protein {ECO:0000250 UniProtKB:P11862} Note=Component of the microfilament system. Colocalizes with actin fibers at the cell border and along the stress fibers in growth- arrested fibroblasts. Mainly membrane-associated. When hyperphosphorylated, accumulates at membrane ruffles (By similarity) Colocalizes with detyrosinated alpha-tubulin along the length of microtubule bundles in inner and outer pillar cells (By similarity) {ECO:0000250 UniProtKB:P11862} |

**Tissue Location**

Ubiquitously expressed with highest levels in liver, lung, and kidney. Not found in spleen

**Images**

---



Please note: All products are 'FOR RESEARCH USE ONLY. NOT FOR USE IN DIAGNOSTIC OR THERAPEUTIC PROCEDURES'.