

CABP Rabbit mAb

Catalog # AP78871

Product Information

Application	WB, IF, ICC
Primary Accession	Q9NZU7
Reactivity	Human, Mouse
Host	Rabbit
Clonality	Monoclonal Antibody
Isotype	IgG
Conjugate	Unconjugated
Immunogen	A synthesized peptide derived from human CABP
Purification	Affinity Chromatography
Calculated MW	39838

Additional Information

Gene ID	9478
Other Names	CABP1
Dilution	WB~~1/500-1/1000 IF~~1:50~200 ICC~~N/A
Format	Liquid in 10mM PBS, pH 7.4, 150mM sodium chloride, 0.05% BSA, 0.02% sodium azide and 50% glycerol.
Storage	Store at 4°C short term. Aliquot and store at -20°C long term. Avoid freeze/thaw cycles.

Protein Information

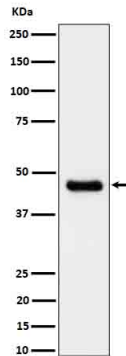
Name	CABP1
Function	Modulates calcium-dependent activity of inositol 1,4,5- triphosphate receptors (ITPRs) (PubMed: 14570872). Inhibits agonist- induced intracellular calcium signaling (PubMed: 15980432). Enhances inactivation and does not support calcium-dependent facilitation of voltage-dependent P/Q-type calcium channels (PubMed: 11865310). Causes calcium-dependent facilitation and inhibits inactivation of L-type calcium channels by binding to the same sites as calmodulin in the C- terminal domain of CACNA1C, but has an opposite effect on channel function (PubMed: 15140941). Suppresses the calcium-dependent inactivation of CACNA1D (By similarity). Inhibits TRPC5 channels (PubMed: 15895247). Prevents NMDA receptor-induced cellular degeneration. Required for the normal transfer of light signals through the retina (By similarity).
Cellular Location	Cytoplasm, cytoskeleton. Cytoplasm, perinuclear region. Cell membrane;

Lipid-anchor; Cytoplasmic side. Golgi apparatus Postsynaptic density.
Note=L-CaBP1 is associated most likely with the cytoskeletal structures,
whereas S-CaBP1 is localized at or near the plasma membrane. [Isoform
S-CaBP1]: Cytoplasm, cell cortex. Cell membrane; Lipid-anchor Note=S-CaBP1
is localized at or near the plasma membrane

Tissue Location

Retina and brain. Somatodendritic compartment of neurons. Calbrain was
found exclusively in brain where it is abundant in the hippocampus,
habenular area in the epithalamus and in the cerebellum

Images



Please note: All products are 'FOR RESEARCH USE ONLY. NOT FOR USE IN DIAGNOSTIC OR THERAPEUTIC PROCEDURES'.