

PUMA Rabbit mAb

Catalog # AP78938

Product Information

Application	WB, IHC-P, IF, FC, ICC
Primary Accession	Q9BXH1
Reactivity	Rat, Human, Mouse
Host	Rabbit
Clonality	Monoclonal Antibody
Isotype	IgG
Conjugate	Unconjugated
Immunogen	A synthesized peptide derived from human PUMA
Purification	Affinity Chromatography
Calculated MW	20532

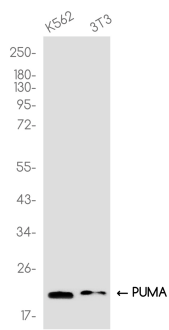
Additional Information

Gene ID	27113
Other Names	BBC3
Dilution	WB~~1/500-1/1000 IHC-P~~N/A IF~~1:50~200 FC~~1:10~50 ICC~~N/A
Format	Liquid in 10mM PBS, pH 7.4, 150mM sodium chloride, 0.05% BSA, 0.02% sodium azide and 50% glycerol.
Storage	Store at 4°C short term. Aliquot and store at -20°C long term. Avoid freeze/thaw cycles.

Protein Information

Name	BBC3
Synonyms	PUMA
Function	Essential mediator of p53/TP53-dependent and p53/TP53- independent apoptosis (PubMed: 11463391 , PubMed: 23340338). Promotes partial unfolding of BCL2L1 and dissociation of BCL2L1 from p53/TP53, releasing the bound p53/TP53 to induce apoptosis (PubMed: 23340338). Regulates ER stress-induced neuronal apoptosis (By similarity).
Cellular Location	Mitochondrion Note=Localized to the mitochondria in order to induce cytochrome c release
Tissue Location	Ubiquitously expressed.

Images



Please note: All products are 'FOR RESEARCH USE ONLY. NOT FOR USE IN DIAGNOSTIC OR THERAPEUTIC PROCEDURES'.