

SATB2 Rabbit mAb

Catalog # AP78946

Product Information

Application	WB, IHC-P, ICC
Primary Accession	Q9UPW6
Reactivity	Human, Mouse, Rat
Host	Rabbit
Clonality	Monoclonal Antibody
Calculated MW	82555

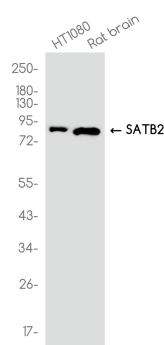
Additional Information

Gene ID	23314
Other Names	SATB2
Dilution	WB~~1/500-1/1000 IHC-P~~N/A ICC~~N/A
Format	Liquid

Protein Information

Name	SATB2
Synonyms	KIAA1034
Function	<p>Binds to DNA, at nuclear matrix- or scaffold-associated regions. Thought to recognize the sugar-phosphate structure of double- stranded DNA.</p> <p>Transcription factor controlling nuclear gene expression, by binding to matrix attachment regions (MARs) of DNA and inducing a local chromatin-loop remodeling. Acts as a docking site for several chromatin remodeling enzymes and also by recruiting corepressors (HDACs) or coactivators (HATs) directly to promoters and enhancers. Required for the initiation of the upper-layer neurons (UL1) specific genetic program and for the inactivation of deep-layer neurons (DL) and UL2 specific genes, probably by modulating BCL11B expression. Repressor of Ctif2 and regulatory determinant of corticocortical connections in the developing cerebral cortex. May play an important role in palate formation. Acts as a molecular node in a transcriptional network regulating skeletal development and osteoblast differentiation.</p>
Cellular Location	Nucleus matrix {ECO:0000255 PROSITE- ProRule:PRU00108, ECO:0000255 PROSITE-ProRule:PRU00374, ECO:0000269 PubMed:14701874}
Tissue Location	High expression in adult brain, moderate expression in fetal brain, and weak expression in adult liver, kidney, and spinal cord and in select brain regions, including amygdala, corpus callosum, caudate nucleus, and hippocampus.

Images



Please note: All products are 'FOR RESEARCH USE ONLY. NOT FOR USE IN DIAGNOSTIC OR THERAPEUTIC PROCEDURES'.