

Cyclin D1 Rabbit mAb

Catalog # AP78958

Product Information

Application	WB, IHC-P, IF, ICC, IP
Primary Accession	P24385
Reactivity	Rat, Human, Mouse
Host	Rabbit
Clonality	Monoclonal Antibody
Isotype	IgG
Conjugate	Unconjugated
Immunogen	A synthesized peptide derived from human Cyclin D1
Purification	Affinity Chromatography
Calculated MW	33729

Additional Information

Gene ID	595
Other Names	CCND1
Dilution	WB~~1/500-1/1000 IHC-P~~N/A IF~~1:50~200 ICC~~N/A IP~~N/A
Format	Liquid in 10mM PBS, pH 7.4, 150mM sodium chloride, 0.05% BSA, 0.02% sodium azide and 50% glycerol.
Storage	Store at 4°C short term. Aliquot and store at -20°C long term. Avoid freeze/thaw cycles.

Protein Information

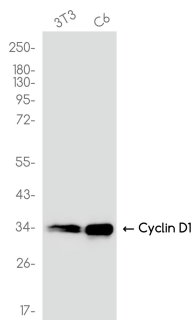
Name	CCND1 {ECO:0000303 PubMed:8204893, ECO:0000312 HGNC:HGNC:1582}
Function	Regulatory component of the cyclin D1-CDK4 (DC) complex that phosphorylates and inhibits members of the retinoblastoma (RB) protein family including RB1 and regulates the cell-cycle during G(1)/S transition (PubMed: 1827756 , PubMed: 1833066 , PubMed: 19412162 , PubMed: 33854235 , PubMed: 8114739 , PubMed: 8302605). Phosphorylation of RB1 allows dissociation of the transcription factor E2F from the RB/E2F complex and the subsequent transcription of E2F target genes which are responsible for the progression through the G(1) phase (PubMed: 1827756 , PubMed: 1833066 , PubMed: 19412162 , PubMed: 8114739 , PubMed: 8302605). Hypophosphorylates RB1 in early G(1) phase (PubMed: 1827756 , PubMed: 1833066 , PubMed: 19412162 , PubMed: 8114739 , PubMed: 8302605). Cyclin D-CDK4 complexes are major integrators of various mitogenic and antimitogenic signals (PubMed: 1827756 , PubMed: 1833066 , PubMed: 19412162 , PubMed: 8302605). Also a substrate for SMAD3,

phosphorylating SMAD3 in a cell-cycle-dependent manner and repressing its transcriptional activity (PubMed:[15241418](#)). Component of the ternary complex, cyclin D1/CDK4/CDKN1B, required for nuclear translocation and activity of the cyclin D-CDK4 complex (PubMed:[9106657](#)). Exhibits transcriptional corepressor activity with INSM1 on the NEUROD1 and INS promoters in a cell cycle-independent manner (PubMed:[16569215](#), PubMed:[18417529](#)).

Cellular Location

Nucleus. Cytoplasm. Nucleus membrane. Note=Cyclin D-CDK4 complexes accumulate at the nuclear membrane and are then translocated to the nucleus through interaction with KIP/CIP family members

Images



Please note: All products are 'FOR RESEARCH USE ONLY. NOT FOR USE IN DIAGNOSTIC OR THERAPEUTIC PROCEDURES'.