

# P Glycoprotein Rabbit mAb

Catalog # AP78971

## Product Information

<b>Application</b>	WB, IHC-P
<b>Primary Accession</b>	<a href="#">P08183</a>
<b>Reactivity</b>	Rat, Human, Mouse
<b>Host</b>	Rabbit
<b>Clonality</b>	Monoclonal Antibody
<b>Isotype</b>	IgG
<b>Conjugate</b>	Unconjugated
<b>Immunogen</b>	A synthesized peptide derived from human P Glycoprotein
<b>Purification</b>	Affinity Chromatography
<b>Calculated MW</b>	141479

## Additional Information

<b>Gene ID</b>	5243
<b>Other Names</b>	ABCB1
<b>Dilution</b>	WB~~1/500-1/1000 IHC-P~~N/A
<b>Format</b>	Liquid in 10mM PBS, pH 7.4, 150mM sodium chloride, 0.05% BSA, 0.02% sodium azide and 50% glycerol.
<b>Storage</b>	Store at 4°C short term. Aliquot and store at -20°C long term. Avoid freeze/thaw cycles.

## Protein Information

<b>Name</b>	ABCB1 ( <a href="#">HGNC:40</a> )
<b>Synonyms</b>	MDR1, PGY1
<b>Function</b>	Translocates drugs and phospholipids across the membrane (PubMed: <a href="#">2897240</a> , PubMed: <a href="#">35970996</a> , PubMed: <a href="#">8898203</a> , PubMed: <a href="#">9038218</a> , PubMed: <a href="#">35507548</a> ). Catalyzes the flop of phospholipids from the cytoplasmic to the exoplasmic leaflet of the apical membrane. Participates mainly to the flop of phosphatidylcholine, phosphatidylethanolamine, beta-D-glucosylceramides and sphingomyelins (PubMed: <a href="#">8898203</a> ). Energy-dependent efflux pump responsible for decreased drug accumulation in multidrug-resistant cells (PubMed: <a href="#">2897240</a> , PubMed: <a href="#">35970996</a> , PubMed: <a href="#">9038218</a> ).
<b>Cellular Location</b>	Cell membrane; Multi-pass membrane protein {ECO:0000255 PROSITE-ProRule:PRU00441} Apical cell membrane. Cytoplasm

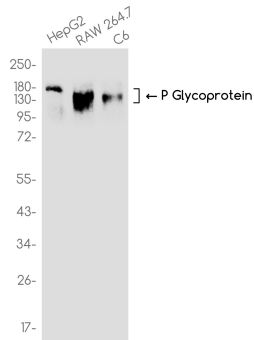
Note=ABCB1 localization is influenced by C1orf115 expression levels (plasma membrane versus cytoplasm). Localized to the apical membrane of enterocytes (PubMed:28408210).

## Tissue Location

Expressed in small intestine (PubMed:28408210). Expressed in liver, kidney and brain.

## Images

---



Please note: All products are 'FOR RESEARCH USE ONLY. NOT FOR USE IN DIAGNOSTIC OR THERAPEUTIC PROCEDURES'.