

# GCK Antibody (N-term)

Purified Rabbit Polyclonal Antibody (Pab)

Catalog # AP7901A

## Product Information

Application	IF, IHC-P, WB, E
Primary Accession	<a href="#">P35557</a>
Reactivity	Human, Rat, Mouse
Host	Rabbit
Clonality	Polyclonal
Isotype	Rabbit IgG
Calculated MW	52191
Antigen Region	1-30

## Additional Information

Gene ID	2645
Other Names	Glucokinase, Hexokinase type IV, HK IV, Hexokinase-4, HK4, Hexokinase-D, GCK
Target/Specificity	This GCK antibody is generated from rabbits immunized with a KLH conjugated synthetic peptide between 1-30 amino acids from the N-terminal region of human GCK.
Dilution	IF~~1:10~50 IHC-P~~1:100~500 WB~~1:1000 E~~Use at an assay dependent concentration.
Format	Purified polyclonal antibody supplied in PBS with 0.09% (W/V) sodium azide. This antibody is prepared by Saturated Ammonium Sulfate (SAS) precipitation followed by dialysis against PBS.
Storage	Maintain refrigerated at 2-8°C for up to 2 weeks. For long term storage store at -20°C in small aliquots to prevent freeze-thaw cycles.
Precautions	GCK Antibody (N-term) is for research use only and not for use in diagnostic or therapeutic procedures.

## Protein Information

Name	GCK {ECO:0000303   PubMed:17573900, ECO:0000312   HGNC:HGNC:4195}
Function	Catalyzes the phosphorylation of hexose, such as D-glucose, D-fructose and D-mannose, to hexose 6-phosphate (D-glucose 6-phosphate, D-fructose 6-phosphate and D-mannose 6-phosphate, respectively) (PubMed: <a href="#">11916951</a> , PubMed: <a href="#">15277402</a> , PubMed: <a href="#">17082186</a> , PubMed: <a href="#">18322640</a> ,

PubMed:[19146401](#), PubMed:[25015100](#), PubMed:[7742312](#), PubMed:[8325892](#)). Compared to other hexokinases, has a weak affinity for D-glucose, and is effective only when glucose is abundant (By similarity). Mainly expressed in pancreatic beta cells and the liver and constitutes a rate-limiting step in glucose metabolism in these tissues (PubMed:[11916951](#), PubMed:[15277402](#), PubMed:[18322640](#), PubMed:[25015100](#), PubMed:[8325892](#)). Since insulin secretion parallels glucose metabolism and the low glucose affinity of GCK ensures that it can change its enzymatic activity within the physiological range of glucose concentrations, GCK acts as a glucose sensor in the pancreatic beta cell (By similarity). In pancreas, plays an important role in modulating insulin secretion (By similarity). In liver, helps to facilitate the uptake and conversion of glucose by acting as an insulin-sensitive determinant of hepatic glucose usage (By similarity). Required to provide D-glucose 6-phosphate for the synthesis of glycogen (PubMed:[8878425](#)). Mediates the initial step of glycolysis by catalyzing phosphorylation of D-glucose to D-glucose 6-phosphate (PubMed:[7742312](#)).

### Cellular Location

Cytoplasm. Nucleus. Mitochondrion {ECO:0000250|UniProtKB:P17712}. Note=Under low glucose concentrations, GCK associates with GCKR and the inactive complex is recruited to the hepatocyte nucleus.

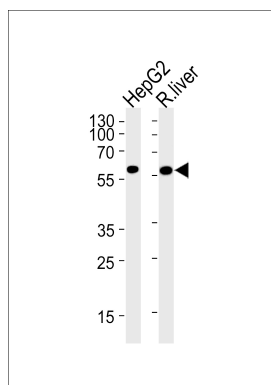
## Background

Hexokinases phosphorylate glucose to produce glucose-6-phosphate, thus committing glucose to the glycolytic pathway. Alternative splicing of the gene for GCK results in three tissue-specific forms of glucokinase, one found in pancreatic islet beta cells and two found in liver. The protein localizes to the outer membrane of mitochondria. In contrast to other forms of hexokinase, this enzyme is not inhibited by its product glucose-6-phosphate but remains active while glucose is abundant. Mutations in the gene have been associated with non-insulin dependent diabetes mellitus (NIDDM), also called maturity onset diabetes of the young, type 2 (MODY2); mutations have also been associated with persistent hyperinsulinemic hypoglycemia of infancy (PHHI).

## References

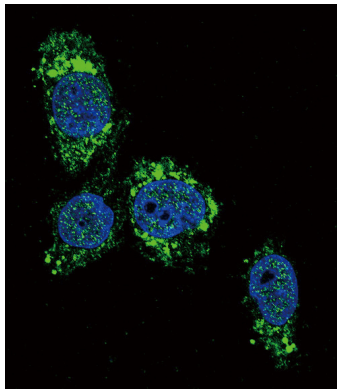
Gloyn, A.L., et al., Diabetes 52(9):2433-2440 (2003).  
Pruhova, S., et al., Diabetologia 46(2):291-295 (2003).  
Rizzo, M.A., et al., J. Biol. Chem. 277(37):34168-34175 (2002).  
Cao, H., et al., Hum. Mutat. 20(6):478-479 (2002).  
Barrio, R., et al., J. Clin. Endocrinol. Metab. 87(6):2532-2539 (2002).

## Images

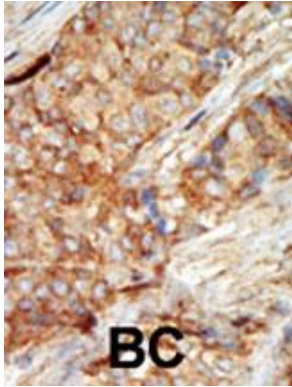


GCK Antibody (M1) (Cat. #AP7901a) western blot analysis in HepG2 cell line and rat liver lysates (35ug/lane). This demonstrates the GCK antibody detected the GCK protein (arrow).

Confocal immunofluorescent analysis of GCK Antibody



(N-term)(Cat#AP7901a) with HepG2 cell followed by Alexa Fluor 488-conjugated goat anti-rabbit IgG (green). DAPI was used to stain the cell nuclear (blue).



Formalin-fixed and paraffin-embedded human cancer tissue reacted with the primary antibody, which was peroxidase-conjugated to the secondary antibody, followed by AEC staining. This data demonstrates the use of this antibody for immunohistochemistry; clinical relevance has not been evaluated. BC = breast carcinoma; HC = hepatocarcinoma.

Please note: All products are 'FOR RESEARCH USE ONLY. NOT FOR USE IN DIAGNOSTIC OR THERAPEUTIC PROCEDURES'.