

CD20 Rabbit mAb

Catalog # AP79020

Product Information

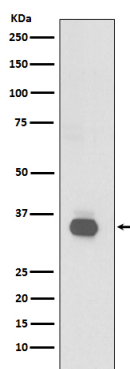
Application	WB, IHC-P, FC
Primary Accession	P11836
Reactivity	Human
Host	Rabbit
Clonality	Monoclonal Antibody
Isotype	IgG
Conjugate	Unconjugated
Immunogen	A synthesized peptide derived from human CD20
Purification	Affinity Chromatography
Calculated MW	33 KDa

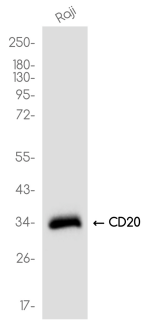
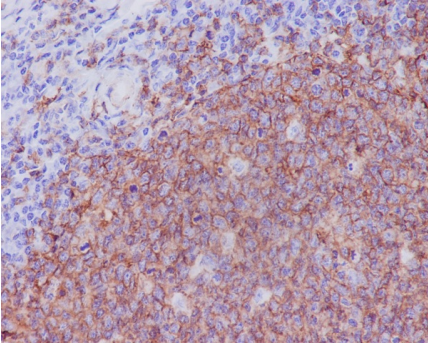
Additional Information

Other Names	MS4A1
Dilution	WB~~1/500-1/1000 IHC-P~~N/A FC~~1/50-1/100
Format	Liquid in 10mM PBS, pH 7.4, 150mM sodium chloride, 0.05% BSA, 0.02% sodium azide and 50% glycerol.
Storage	Store at 4°C short term. Aliquot and store at -20°C long term. Avoid freeze/thaw cycles.

Protein Information

Images





Please note: All products are 'FOR RESEARCH USE ONLY. NOT FOR USE IN DIAGNOSTIC OR THERAPEUTIC PROCEDURES'.