

Wilms Tumor Protein Rabbit mAb

Catalog # AP79023

Product Information

Application	WB, IHC-P, FC, ICC
Primary Accession	P19544
Reactivity	Human, Mouse
Host	Rabbit
Clonality	Monoclonal Antibody
Calculated MW	49188

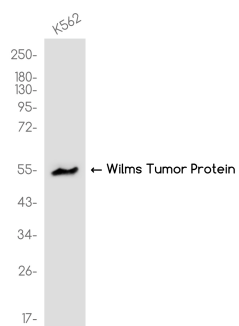
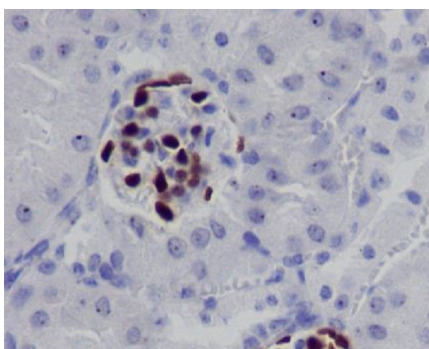
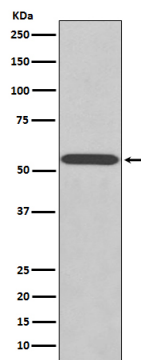
Additional Information

Gene ID	7490
Other Names	WT1
Dilution	WB~~1/500-1/1000 IHC-P~~N/A FC~~1:10~50 ICC~~N/A
Format	Liquid

Protein Information

Name	WT1
Function	Transcription factor that plays an important role in cellular development and cell survival (PubMed: 7862533). Recognizes and binds to the DNA sequence 5'-GCG(T/G)GGGCG-3' (PubMed: 17716689 , PubMed: 25258363 , PubMed: 7862533). Regulates the expression of numerous target genes, including EPO. Plays an essential role for development of the urogenital system. It has a tumor suppressor as well as an oncogenic role in tumor formation. Function may be isoform-specific: isoforms lacking the KTS motif may act as transcription factors (PubMed: 15520190). Isoforms containing the KTS motif may bind mRNA and play a role in mRNA metabolism or splicing (PubMed: 16934801). Isoform 1 has lower affinity for DNA, and can bind RNA (PubMed: 19123921).
Cellular Location	Nucleus. Nucleus, nucleolus. Cytoplasm. Note=Isoforms lacking the KTS motif have a diffuse nuclear location (PubMed:15520190). Shuttles between nucleus and cytoplasm. {ECO:0000250, ECO:0000269 PubMed:15520190} [Isoform 4]: Nucleus, nucleoplasm
Tissue Location	Expressed in the kidney and a subset of hematopoietic cells

Images



Please note: All products are 'FOR RESEARCH USE ONLY. NOT FOR USE IN DIAGNOSTIC OR THERAPEUTIC PROCEDURES'.