

RKIP Rabbit mAb

Catalog # AP79026

Product Information

Application	WB, IHC-P, IF, ICC, IP
Primary Accession	P30086
Reactivity	Rat, Human, Mouse
Host	Rabbit
Clonality	Monoclonal Antibody
Isotype	IgG
Conjugate	Unconjugated
Immunogen	A synthesized peptide derived from human PEBP1
Purification	Affinity Chromatography
Calculated MW	21057

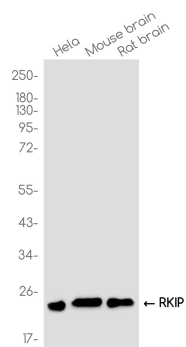
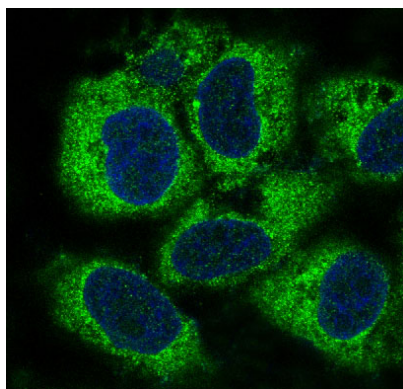
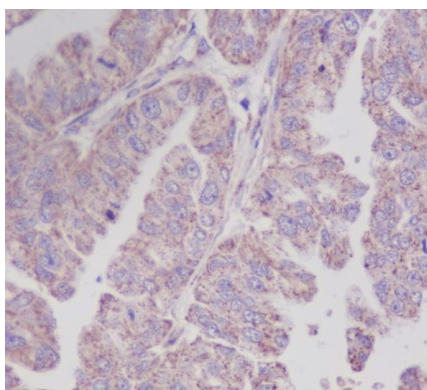
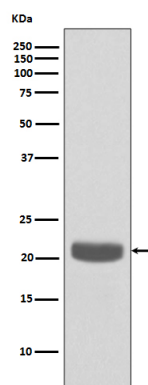
Additional Information

Gene ID	5037
Other Names	PEBP1
Dilution	WB~~1/500-1/1000 IHC-P~~N/A IF~~1/50-1/200 ICC~~N/A IP~~1/20
Format	Liquid in 10mM PBS, pH 7.4, 150mM sodium chloride, 0.05% BSA, 0.02% sodium azide and 50% glycerol.
Storage	Store at 4°C short term. Aliquot and store at -20°C long term. Avoid freeze/thaw cycles.

Protein Information

Name	PEBP1
Synonyms	PBP, PEBP
Function	Binds ATP, opioids and phosphatidylethanolamine. Has lower affinity for phosphatidylinositol and phosphatidylcholine. Serine protease inhibitor which inhibits thrombin, neuropsin and chymotrypsin but not trypsin, tissue type plasminogen activator and elastase (By similarity). Inhibits the kinase activity of RAF1 by inhibiting its activation and by dissociating the RAF1/MEK complex and acting as a competitive inhibitor of MEK phosphorylation.
Cellular Location	Cytoplasm.

Images



Please note: All products are 'FOR RESEARCH USE ONLY. NOT FOR USE IN DIAGNOSTIC OR THERAPEUTIC PROCEDURES'.