

EDG3 Rabbit mAb

Catalog # AP79051

Product Information

Application	WB
Primary Accession	Q99500
Reactivity	Rat, Human, Mouse
Host	Rabbit
Clonality	Monoclonal Antibody
Isotype	IgG
Conjugate	Unconjugated
Immunogen	A synthesized peptide derived from human S1PR3
Purification	Affinity Purified
Calculated MW	42250

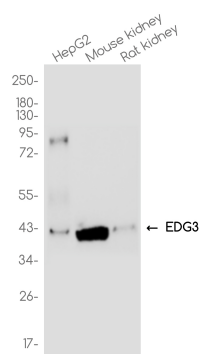
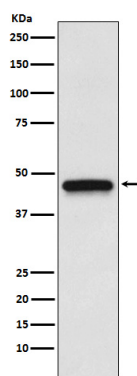
Additional Information

Gene ID	1903
Other Names	S1PR3
Dilution	WB~~1/500-1/1000
Format	Liquid in 10mM PBS, pH 7.4, 150mM sodium chloride, 0.05% BSA, 0.02% sodium azide and 50% glycerol.
Storage	Store at 4°C short term. Aliquot and store at -20°C long term. Avoid freeze/thaw cycles.

Protein Information

Name	S1PR3 (HGNC:3167)
Function	Receptor for the lysosphingolipid sphingosine 1-phosphate (S1P). S1P is a bioactive lysophospholipid that elicits diverse physiological effect on most types of cells and tissues. When expressed in rat HTC4 hepatoma cells, is capable of mediating S1P-induced cell proliferation and suppression of apoptosis.
Cellular Location	Cell membrane; Multi-pass membrane protein.
Tissue Location	Expressed in all tissues, but most abundantly in heart, placenta, kidney, and liver

Images



Please note: All products are 'FOR RESEARCH USE ONLY. NOT FOR USE IN DIAGNOSTIC OR THERAPEUTIC PROCEDURES'.