

# MEKK6 Antibody (C-term)

Purified Rabbit Polyclonal Antibody (Pab)

Catalog # AP7912a

## Product Information

---

<b>Application</b>	WB, IHC-P, E
<b>Primary Accession</b>	<a href="#">O95382</a>
<b>Reactivity</b>	Human, Mouse
<b>Host</b>	Rabbit
<b>Clonality</b>	Polyclonal
<b>Isotype</b>	Rabbit IgG
<b>Calculated MW</b>	142596
<b>Antigen Region</b>	1028-1058

## Additional Information

---

<b>Gene ID</b>	9064
<b>Other Names</b>	Mitogen-activated protein kinase kinase kinase 6, Apoptosis signal-regulating kinase 2, MAP3K6, ASK2, MAPKKK6, MEKK6
<b>Target/Specificity</b>	This MEKK6 antibody is generated from rabbits immunized with a KLH conjugated synthetic peptide between 1028-1058 amino acids from the C-terminal region of human MEKK6.
<b>Dilution</b>	WB~~1:1000 IHC-P~~1:100~500 E~~Use at an assay dependent concentration.
<b>Format</b>	Purified polyclonal antibody supplied in PBS with 0.09% (W/V) sodium azide. This antibody is prepared by Saturated Ammonium Sulfate (SAS) precipitation followed by dialysis against PBS.
<b>Storage</b>	Maintain refrigerated at 2-8°C for up to 2 weeks. For long term storage store at -20°C in small aliquots to prevent freeze-thaw cycles.
<b>Precautions</b>	MEKK6 Antibody (C-term) is for research use only and not for use in diagnostic or therapeutic procedures.

## Protein Information

---

<b>Name</b>	MAP3K6
<b>Synonyms</b>	ASK2, MAPKKK6, MEKK6
<b>Function</b>	Component of a protein kinase signal transduction cascade. Activates the JNK, but not ERK or p38 kinase pathways.

## Background

---

Mitogen-activated protein kinase (MAPK) signaling cascades include MAPK or extracellular signal-regulated kinase (ERK), MAPK kinase (MKK or MEK), and MAPK kinase kinase (MAPKKK or MEKK). MAPKK kinase/MEKK phosphorylates and activates its downstream protein kinase, MAPK kinase/MEK, which in turn activates MAPK. The kinases of these signaling cascades are highly conserved, and homologs exist in yeast, *Drosophila*, and mammalian cells. MEKK6 activates the JNK, but not ERK or p38 kinase pathways.

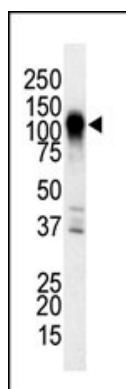
## References

---

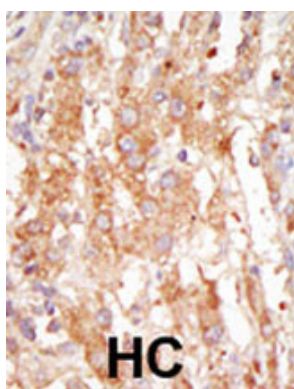
Wang, X.S., et al., *Biochem. Biophys. Res. Commun.* 253(1):33-37 (1998).

## Images

---



The anti-MEKK6 Pab (Cat. #AP7912a) is used in Western blot to detect MEKK6 in NIH3T3 cell lysate.



Formalin-fixed and paraffin-embedded human cancer tissue reacted with the primary antibody, which was peroxidase-conjugated to the secondary antibody, followed by DAB staining. This data demonstrates the use of this antibody for immunohistochemistry; clinical relevance has not been evaluated. BC = breast carcinoma; HC = hepatocarcinoma.

## Citations

---

- [Protein profiling in human sera for identification of potential lung cancer biomarkers using antibody microarray.](#)

Please note: All products are 'FOR RESEARCH USE ONLY. NOT FOR USE IN DIAGNOSTIC OR THERAPEUTIC PROCEDURES'.