

MLK2 Antibody (C-term)

Purified Rabbit Polyclonal Antibody (Pab)

Catalog # AP7920a

Product Information

Application	WB, IHC-P, E
Primary Accession	Q02779
Reactivity	Human
Host	Rabbit
Clonality	Polyclonal
Isotype	Rabbit IgG
Calculated MW	103694
Antigen Region	628-659

Additional Information

Gene ID	4294
Other Names	Mitogen-activated protein kinase kinase kinase 10, Mixed lineage kinase 2, Protein kinase MST, MAP3K10, MLK2, MST
Target/Specificity	This MLK2 antibody is generated from rabbits immunized with a KLH conjugated synthetic peptide between 628-659 amino acids from the C-terminal region of human MLK2.
Dilution	WB~~1:1000 IHC-P~~1:100~500 E~~Use at an assay dependent concentration.
Format	Purified polyclonal antibody supplied in PBS with 0.09% (W/V) sodium azide. This antibody is prepared by Saturated Ammonium Sulfate (SAS) precipitation followed by dialysis against PBS.
Storage	Maintain refrigerated at 2-8°C for up to 2 weeks. For long term storage store at -20°C in small aliquots to prevent freeze-thaw cycles.
Precautions	MLK2 Antibody (C-term) is for research use only and not for use in diagnostic or therapeutic procedures.

Protein Information

Name	MAP3K10
Synonyms	MLK2, MST
Function	Activates the JUN N-terminal pathway.
Tissue Location	Expressed in brain and skeletal muscle.

Background

MLK2 is a member of the serine/threonine kinase family. This kinase has been shown to activate MAPK8/JNK and MKK4/SEK1, and this kinase itself can be phosphorylated, and thus activated by JNK kinases. This kinase functions preferentially on the JNK signaling pathway, and is reported to be involved in nerve growth factor (NGF) induced neuronal apoptosis.

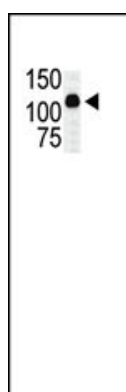
References

Dorow, D.S., et al., Eur. J. Biochem. 234(2):492-500 (1995).

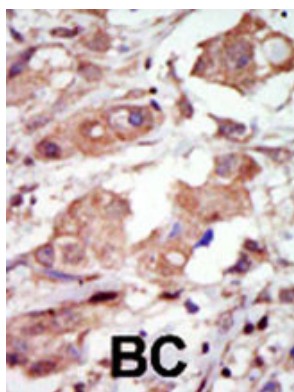
Katoh, M., et al., Oncogene 10(7):1447-1451 (1995).

Dorow, D.S., et al., Eur. J. Biochem. 213(2):701-710 (1993).

Images



The anti-MLK2 Pab (Cat. #AP7920a) is used in Western blot to detect MLK2 in transfected COS7 cell lysate. Data is kindly provided by Drs. M.K. Barthwal and A. Rana from Texas A&M University, Health Science Center (Temple, TX).



Formalin-fixed and paraffin-embedded human cancer tissue reacted with the primary antibody, which was peroxidase-conjugated to the secondary antibody, followed by DAB staining. This data demonstrates the use of this antibody for immunohistochemistry; clinical relevance has not been evaluated. BC = breast carcinoma; HC = hepatocarcinoma.

Citations

- [Mixed lineage kinase-3 stabilizes and functionally cooperates with TRIBBL-3 to compromise mitochondrial integrity in cytokine-induced death of pancreatic beta cells.](#)
- [Mixed lineage kinase 2 and hippocampin are localized in Lewy bodies of Parkinson's disease.](#)

Please note: All products are 'FOR RESEARCH USE ONLY. NOT FOR USE IN DIAGNOSTIC OR THERAPEUTIC PROCEDURES'.