

SGK2 Antibody (C-term)

Purified Rabbit Polyclonal Antibody (Pab)

Catalog # AP7947b

Product Information

Application	WB, IHC-P, E
Primary Accession	Q9HBY8
Reactivity	Human
Host	Rabbit
Clonality	Polyclonal
Isotype	Rabbit IgG
Clone Names	RB0998
Calculated MW	41175
Antigen Region	395-426

Additional Information

Gene ID	10110
Other Names	Serine/threonine-protein kinase Sgk2, Serum/glucocorticoid-regulated kinase 2, SGK2
Target/Specificity	This SGK2 antibody is generated from rabbits immunized with a KLH conjugated synthetic peptide between 395-426 amino acids from the C-terminal region of human SGK2.
Dilution	WB~~1:1000 IHC-P~~1:100~500 E~~Use at an assay dependent concentration.
Format	Purified polyclonal antibody supplied in PBS with 0.09% (W/V) sodium azide. This antibody is prepared by Saturated Ammonium Sulfate (SAS) precipitation followed by dialysis against PBS.
Storage	Maintain refrigerated at 2-8°C for up to 2 weeks. For long term storage store at -20°C in small aliquots to prevent freeze-thaw cycles.
Precautions	SGK2 Antibody (C-term) is for research use only and not for use in diagnostic or therapeutic procedures.

Protein Information

Name	SGK2
Function	Serine/threonine-protein kinase which is involved in the regulation of a wide variety of ion channels, membrane transporters, cell growth, survival and proliferation. Up-regulates Na(+) channels: SCNN1A/ENAC, K(+) channels: KCNA3/Kv1.3, KCNE1 and KCNQ1, amino acid transporter: SLC6A19, glutamate

transporter: SLC1A6/EAAT4, glutamate receptors: GRIA1/GLUR1 and GRIK2/GLUR6, Na(+)/H(+) exchanger: SLC9A3/NHE3, and the Na(+)/K(+) ATPase.

Cellular Location Cytoplasm. Nucleus

Tissue Location Highly expressed in liver, kidney and pancreas, and at lower levels in brain.

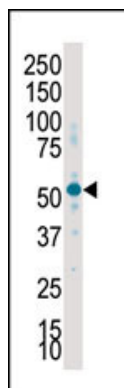
Background

SGK2, a Ser/Thr protein kinase, is similar to serum- and glucocorticoid-induced protein kinase (SGK), but this gene product is not induced by serum or glucocorticoids. Expression is induced in response to signals that activate phosphatidylinositol 3-kinase, which is also true for SGK.

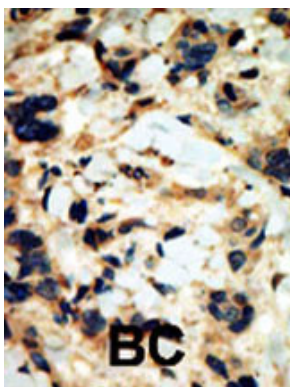
References

Friedrich, B., et al., Pflugers Arch. 445(6):693-696 (2003).
Embark, H.M., et al., Pflugers Arch. 445(5):601-606 (2003).
Gamper, N., et al., Pflugers Arch. 445(1):60-66 (2002).
Lang, F., et al., Sci. STKE 2001 (108), RE17 (2001).
Kobayashi, T., et al., Biochem. J. 344 Pt 1, 189-197 (1999).

Images



Western blot analysis of anti-SKG2 Pab (Cat. #AP7947b) in placenta lysate. SKG2 (arrow) was detected using purified Pab. Secondary HRP-anti-rabbit was used for signal visualization with chemiluminescence.



Formalin-fixed and paraffin-embedded human cancer tissue reacted with the primary antibody, which was peroxidase-conjugated to the secondary antibody, followed by DAB staining. This data demonstrates the use of this antibody for immunohistochemistry; clinical relevance has not been evaluated. BC = breast carcinoma; HC = hepatocarcinoma.

Citations

- [Progression Risk Score Estimation Based on Immunostaining Data in Oral Cancer Using Unsupervised Hierarchical Clustering Analysis: A Retrospective Study in Taiwan.](#)

Please note: All products are 'FOR RESEARCH USE ONLY. NOT FOR USE IN DIAGNOSTIC OR THERAPEUTIC PROCEDURES'.