

# SGK3 Antibody (Center)

Purified Rabbit Polyclonal Antibody (Pab)  
Catalog # AP7949b

## Product Information

---

<b>Application</b>	WB, IHC-P, E
<b>Primary Accession</b>	<a href="#">Q96BR1</a>
<b>Reactivity</b>	Human
<b>Host</b>	Rabbit
<b>Clonality</b>	Polyclonal
<b>Isotype</b>	Rabbit IgG
<b>Antigen Region</b>	108-139

## Additional Information

---

<b>Other Names</b>	Serine/threonine-protein kinase Sgk3, Cytokine-independent survival kinase, Serum/glucocorticoid-regulated kinase 3, Serum/glucocorticoid-regulated kinase-like, SGK3, CISK, SGKL
<b>Target/Specificity</b>	This SGK3 antibody is generated from rabbits immunized with a KLH conjugated synthetic peptide between 108-139 amino acids from the Central region of human SGK3.
<b>Dilution</b>	WB~1:1000 IHC-P~1:100~500 E~Use at an assay dependent concentration.
<b>Format</b>	Purified polyclonal antibody supplied in PBS with 0.05% (V/V) Proclin 300. This antibody is purified through a protein A column, followed by peptide affinity purification.
<b>Storage</b>	Maintain refrigerated at 2-8°C for up to 2 weeks. For long term storage store at -20°C in small aliquots to prevent freeze-thaw cycles.
<b>Precautions</b>	SGK3 Antibody (Center) is for research use only and not for use in diagnostic or therapeutic procedures.

## Protein Information

---

### Background

---

SGK3, a Ser/Thr protein kinase, is similar to serum- and glucocorticoid-induced protein kinase (SGK), but this gene product is not induced by serum or glucocorticoids. Expression is induced in response to signals that activate phosphatidylinositol 3-kinase, which is also true for SGK.

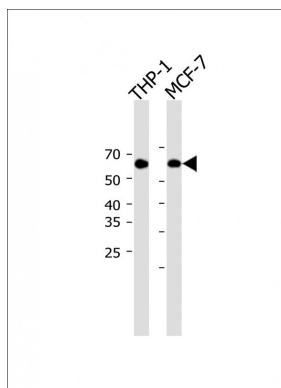
### References

---

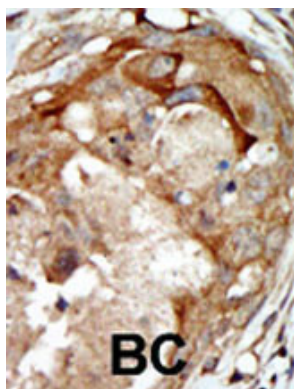
Friedrich, B., et al., Pflugers Arch. 445(6):693-696 (2003).  
Embark, H.M., et al., Pflugers Arch. 445(5):601-606 (2003).  
Brickley, D.R., et al., J. Biol. Chem. 277(45):43064-43070 (2002).  
Gamper, N., et al., Pflugers Arch. 445(1):60-66 (2002).  
Dai, F., et al., Biochem. Biophys. Res. Commun. 293(4):1191-1196 (2002).

## Images

---



All lanes: Anti-SGK3 Antibody (Center) at 1:500 dilution  
Lane 1: THP-1 whole cell lysate Lane 2: MCF-7 whole cell lysate  
Lysates/proteins at 20  $\mu$ g per lane. Secondary: Goat Anti-Rabbit IgG, (H+L), Peroxidase conjugated (ASP1615) at 1/15000 dilution. Observed band size: 60 kDa  
Blocking/Dilution buffer: 5% NFDM/TBST.



Formalin-fixed and paraffin-embedded human cancer tissue reacted with the primary antibody, which was peroxidase-conjugated to the secondary antibody, followed by AEC staining. This data demonstrates the use of this antibody for immunohistochemistry; clinical relevance has not been evaluated. BC = breast carcinoma; HC = hepatocarcinoma.

## Citations

---

- [IL-6 activates serum and glucocorticoid kinase via p38alpha mitogen-activated protein kinase pathway.](#)

Please note: All products are 'FOR RESEARCH USE ONLY. NOT FOR USE IN DIAGNOSTIC OR THERAPEUTIC PROCEDURES'.