

NEK11L Antibody (C-term)

Purified Rabbit Polyclonal Antibody (Pab)

Catalog # AP8070b

Product Information

Application	WB, E
Primary Accession	Q8NG66
Reactivity	Human
Host	Rabbit
Clonality	Polyclonal
Isotype	Rabbit IgG
Clone Names	RB2994
Calculated MW	74192
Antigen Region	480-510

Additional Information

Gene ID	79858
Other Names	Serine/threonine-protein kinase Nek11, Never in mitosis A-related kinase 11, NimA-related protein kinase 11, NEK11 (HGNC:18593)
Target/Specificity	This NEK11L antibody is generated from rabbits immunized with a KLH conjugated synthetic peptide between 480-510 amino acids from the C-terminal region of human NEK11L.
Dilution	WB~~1:1000 E~~Use at an assay dependent concentration.
Format	Purified polyclonal antibody supplied in PBS with 0.09% (W/V) sodium azide. This antibody is purified through a protein A column, followed by peptide affinity purification.
Storage	Maintain refrigerated at 2-8°C for up to 2 weeks. For long term storage store at -20°C in small aliquots to prevent freeze-thaw cycles.
Precautions	NEK11L Antibody (C-term) is for research use only and not for use in diagnostic or therapeutic procedures.

Protein Information

Name	NEK11 (HGNC:18593)
Function	Protein kinase which plays an important role in the G2/M checkpoint response to DNA damage. Controls degradation of CDC25A by directly phosphorylating it on residues whose phosphorylation is required for BTRC-mediated polyubiquitination and degradation.

Cellular Location	Nucleus. Nucleus, nucleolus. Note=Nuclear during interphase but moves to the polar microtubules during prometaphase and metaphase (PubMed:12154088). Accumulates in the nucleolus in G1/S-arrested cells (PubMed:15161910).
Tissue Location	Poorly expressed in cerebellum, trachea, lung, appendix, and uterus.

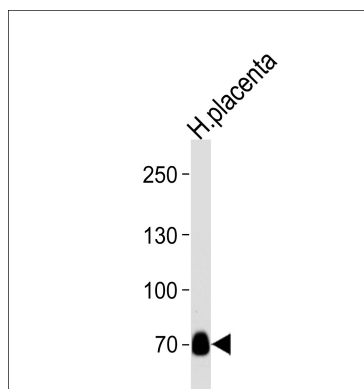
Background

NEK11 belongs to the NIMA family of kinases, which are involved in DNA replication and genotoxic stress responses (Noguchi et al., 2002 [PubMed 12154088]).[supplied by OMIM]

References

Blume-Jensen P, et al. Nature 2001. 411: 355.
Cantrell D, J. Cell Sci. 2001. 114: 1439.
Jhiang S Oncogene 2000. 19: 5590.
Manning G, et al. Science 2002. 298: 1912.
Moller, D, et al. Am. J. Physiol. 1994. 266: C351-C359.
Robertson, S. et al. Trends Genet. 2000. 16: 368.
Robinson D, et al. Oncogene 2000. 19: 5548.
Van der Ven, P, et al. Hum. Molec. Genet. 1993. 2: 1889.
Vanhaesebroeck, B, et al. Biochem. J. 2000. 346: 561.
Van Weering D, et al. Recent Results Cancer Res. 1998. 154: 271.

Images



Western blot analysis of lysate from human placenta tissue lysate, using NEK11L Antibody (E495)(Cat. #AP8070b). AP8070b was diluted at 1:1000 at each lane. A goat anti-rabbit IgG H&L(HRP) at 1:5000 dilution was used as the secondary antibody. Lysate at 35ug per lane.

Please note: All products are 'FOR RESEARCH USE ONLY. NOT FOR USE IN DIAGNOSTIC OR THERAPEUTIC PROCEDURES'.