

# PPM1G Antibody (Center)

Purified Rabbit Polyclonal Antibody (Pab)

Catalog # AP8434b

## Product Information

---

<b>Application</b>	WB, E
<b>Primary Accession</b>	<a href="#">O15355</a>
<b>Reactivity</b>	Human, Mouse
<b>Host</b>	Rabbit
<b>Clonality</b>	Polyclonal
<b>Isotype</b>	Rabbit IgG
<b>Clone Names</b>	RB5657
<b>Calculated MW</b>	59272
<b>Antigen Region</b>	150-180

## Additional Information

---

<b>Gene ID</b>	5496
<b>Other Names</b>	Protein phosphatase 1G, Protein phosphatase 1C, Protein phosphatase 2C isoform gamma, PP2C-gamma, Protein phosphatase magnesium-dependent 1 gamma, PPM1G, PPM1C
<b>Target/Specificity</b>	This PPM1G antibody is generated from rabbits immunized with a KLH conjugated synthetic peptide between 150-180 amino acids from the Central region of human PPM1G.
<b>Dilution</b>	WB~~1:1000 E~~Use at an assay dependent concentration.
<b>Format</b>	Purified polyclonal antibody supplied in PBS with 0.09% (W/V) sodium azide. This antibody is prepared by Saturated Ammonium Sulfate (SAS) precipitation followed by dialysis against PBS.
<b>Storage</b>	Maintain refrigerated at 2-8°C for up to 2 weeks. For long term storage store at -20°C in small aliquots to prevent freeze-thaw cycles.
<b>Precautions</b>	PPM1G Antibody (Center) is for research use only and not for use in diagnostic or therapeutic procedures.

## Protein Information

---

<b>Name</b>	PPM1G
<b>Synonyms</b>	PPM1C
<b>Cellular Location</b>	Cytoplasm. Membrane; Lipid-anchor

**Tissue Location**

Widely expressed. Most abundant in testis, skeletal muscle, and heart

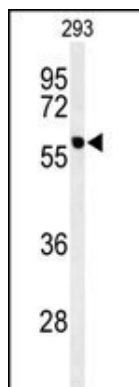
**Background**

---

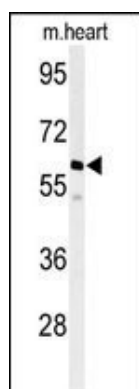
PPM1G is a member of the PP2C family of Ser/Thr protein phosphatases. PP2C family members are known to be negative regulators of cell stress response pathways. This phosphatase is found to be responsible for the dephosphorylation of Pre-mRNA splicing factors, which is important for the formation of functional spliceosome. Studies of a similar gene in mice suggested a role of this phosphatase in regulating cell cycle progression.

**Images**

---



Western blot analysis of hPPM1G-C164 (Cat. #AP8434b) in 293 cell line lysates (35ug/lane). PPM1G (arrow) was detected using the purified Pab.



Western blot analysis of hPPM1G-C164 (Cat. #AP8434b) in mouse heart tissue lysates (35ug/lane). PPM1G (arrow) was detected using the purified Pab.

Please note: All products are 'FOR RESEARCH USE ONLY. NOT FOR USE IN DIAGNOSTIC OR THERAPEUTIC PROCEDURES'.