

ZFP36 Antibody (Center)

Purified Rabbit Polyclonal Antibody (Pab)
Catalog # AP8520c

Product Information

Application	WB, IHC-P, FC, E
Primary Accession	P16415
Reactivity	Human, Mouse
Host	Rabbit
Clonality	Polyclonal
Isotype	Rabbit IgG
Clone Names	RB19979
Calculated MW	70270
Antigen Region	119-148

Additional Information

Gene ID	55552
Other Names	Zinc finger protein 823, Zinc finger protein ZFP-36, ZNF823, ZFP36
Target/Specificity	This ZFP36 antibody is generated from rabbits immunized with a KLH conjugated synthetic peptide between 119-148 amino acids from the Central region of human ZFP36.
Dilution	WB~~1:1000 IHC-P~~1:100~500 FC~~1:10~50 E~~Use at an assay dependent concentration.
Format	Purified polyclonal antibody supplied in PBS with 0.09% (W/V) sodium azide. This antibody is prepared by Saturated Ammonium Sulfate (SAS) precipitation followed by dialysis against PBS.
Storage	Maintain refrigerated at 2-8°C for up to 2 weeks. For long term storage store at -20°C in small aliquots to prevent freeze-thaw cycles.
Precautions	ZFP36 Antibody (Center) is for research use only and not for use in diagnostic or therapeutic procedures.

Protein Information

Name	ZNF823
Synonyms	ZFP36
Function	May be involved in transcriptional regulation.

Background

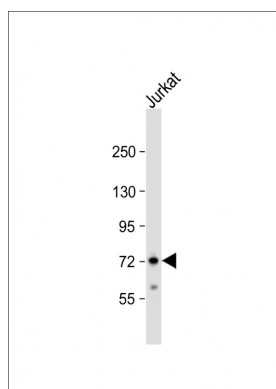
ZFP36 may be involved in transcriptional regulation.

References

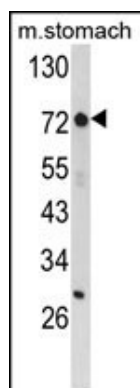
Kimura,K., et.al., Genome Res. 16 (1), 55-65 (2006)

Strausberg,R.L., et.al., Proc. Natl. Acad. Sci. U.S.A. 99 (26), 16899-16903 (2002)

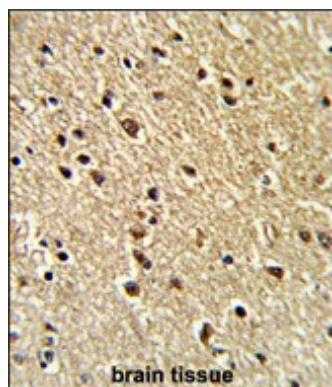
Images



Anti-ZFP36 Antibody (Center) at 1:1000 dilution + Jurkat whole cell lysate Lysates/proteins at 20 µg per lane. Secondary Goat Anti-Rabbit IgG, (H+L), Peroxidase conjugated at 1/10000 dilution. Predicted band size : 70 kDa Blocking/Dilution buffer: 5% NFDm/TBST.

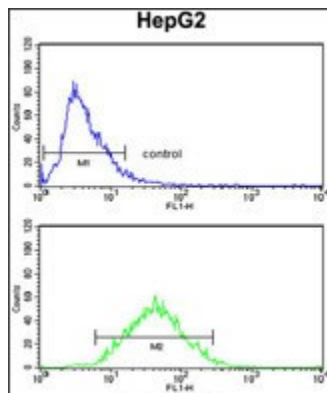


Western blot analysis of ZFP36 Antibody (Center) (Cat. #AP8520c) in mouse stomach tissue lysates (35ug/lane).ZFP36 (arrow) was detected using the purified Pab.(8ug/ml)



Formalin-fixed and paraffin-embedded human brain tissue reacted with ZFP36 Antibody (Center), which was peroxidase-conjugated to the secondary antibody, followed by DAB staining. This data demonstrates the use of this antibody for immunohistochemistry; clinical relevance has not been evaluated.

ZFP36 Antibody (Center) (Cat.#AP8520c) flow cytometry analysis of HepG2 cells (bottom histogram) compared to a negative control cell (top histogram). FITC-conjugated goat-anti-rabbit secondary antibodies were used for the analysis.



Citations

- [Unraveling the interplay of ferroptosis and immune dysregulation in diabetic kidney disease: a comprehensive molecular analysis](#)
- [NU6300 covalently reacts with cysteine-191 of gasdermin D to block its cleavage and palmitoylation](#)

Please note: All products are 'FOR RESEARCH USE ONLY. NOT FOR USE IN DIAGNOSTIC OR THERAPEUTIC PROCEDURES'.