

# PEA-15 Antibody (C-term)

Affinity Purified Rabbit Polyclonal Antibody (Pab)

Catalog # AP8524b

## Product Information

---

<b>Application</b>	WB, IHC-P, FC, E
<b>Primary Accession</b>	<a href="#">Q15121</a>
<b>Other Accession</b>	<a href="#">Q5U318</a> , <a href="#">Q62048</a> , <a href="#">Q9Z297</a>
<b>Reactivity</b>	Human, Mouse
<b>Predicted</b>	Hamster, Rat
<b>Host</b>	Rabbit
<b>Clonality</b>	Polyclonal
<b>Isotype</b>	Rabbit IgG
<b>Clone Names</b>	RB21195
<b>Calculated MW</b>	15040
<b>Antigen Region</b>	86-115

## Additional Information

---

<b>Gene ID</b>	8682
<b>Other Names</b>	Astrocytic phosphoprotein PEA-15, 15 kDa phosphoprotein enriched in astrocytes, Phosphoprotein enriched in diabetes, PED, PEA15
<b>Target/Specificity</b>	This PEA-15 antibody is generated from rabbits immunized with a KLH conjugated synthetic peptide between 86-115 amino acids from the C-terminal region of human PEA-15.
<b>Dilution</b>	WB~~1:1000 IHC-P~~1:100~500 FC~~1:10~50 E~~Use at an assay dependent concentration.
<b>Format</b>	Purified polyclonal antibody supplied in PBS with 0.09% (W/V) sodium azide. This antibody is purified through a protein A column, followed by peptide affinity purification.
<b>Storage</b>	Maintain refrigerated at 2-8°C for up to 2 weeks. For long term storage store at -20°C in small aliquots to prevent freeze-thaw cycles.
<b>Precautions</b>	PEA-15 Antibody (C-term) is for research use only and not for use in diagnostic or therapeutic procedures.

## Protein Information

---

<b>Name</b>	PEA15
<b>Function</b>	Blocks Ras-mediated inhibition of integrin activation and modulates the ERK

MAP kinase cascade. Inhibits RPS6KA3 activities by retaining it in the cytoplasm (By similarity). Inhibits both TNFRSF6- and TNFRSF1A-mediated CASP8 activity and apoptosis. Regulates glucose transport by controlling both the content of SLC2A1 glucose transporters on the plasma membrane and the insulin-dependent trafficking of SLC2A4 from the cell interior to the surface.

**Cellular Location**

Cytoplasm. Note=Associated with microtubules.

**Tissue Location**

Ubiquitously expressed. Most abundant in tissues such as heart, brain, muscle and adipose tissue which utilize glucose as an energy source. Lower expression in glucose-producing tissues Higher levels of expression are found in tissues from individuals with type 2 diabetes than in controls.

## Background

---

PEA15 is a death effector domain (DED)-containing protein predominantly expressed in the central nervous system, particularly in astrocytes.

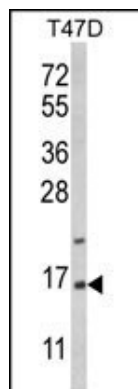
## References

---

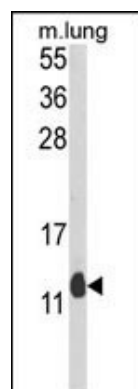
Trencia,A., et.al., Mol. Cell. Biol. 23 (13), 4511-4521 (2003)  
Sugiyama,N., et.al., Mol. Cell Proteomics 6 (6), 1103-1109 (2007)

## Images

---

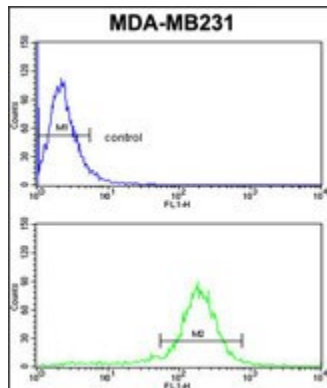
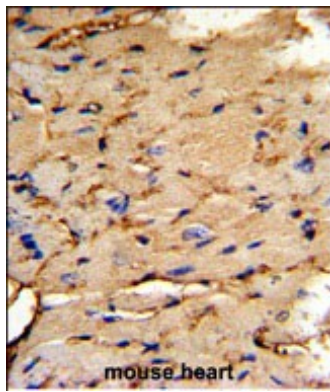


Western blot analysis of PEA-15 Antibody (C-term) (Cat. #AP8524b) in T47D cell line lysates (35ug/lane).PEA-15 (arrow) was detected using the purified Pab.



Western blot analysis of PEA-15 Antibody (C-term) (Cat. #AP8524b) in mouse lung tissue lysates (35ug/lane).PEA-15 (arrow) was detected using the purified Pab.

Formalin-fixed and paraffin-embedded mouse heart tissue reacted with PEA-15 Antibody (C-term), which was peroxidase-conjugated to the secondary antibody, followed by DAB staining. This data demonstrates the use of this antibody for immunohistochemistry; clinical relevance has not been evaluated.



PEA-15 Antibody (C-term) (Cat. #AP8524b) flow cytometric analysis of MDA-MB231 cells (bottom histogram) compared to a negative control cell (top histogram). FITC-conjugated goat-anti-rabbit secondary antibodies were used for the analysis.

Please note: All products are 'FOR RESEARCH USE ONLY. NOT FOR USE IN DIAGNOSTIC OR THERAPEUTIC PROCEDURES'.