

# LRPAP1 Antibody (C-term)

Affinity Purified Rabbit Polyclonal Antibody (Pab)

Catalog # AP8529b

## Product Information

---

<b>Application</b>	IHC-P, FC, WB, E
<b>Primary Accession</b>	<a href="#">P30533</a>
<b>Reactivity</b>	Human, Rat, Mouse
<b>Host</b>	Rabbit
<b>Clonality</b>	Polyclonal
<b>Isotype</b>	Rabbit IgG
<b>Calculated MW</b>	41466
<b>Antigen Region</b>	281-309

## Additional Information

---

<b>Gene ID</b>	4043
<b>Other Names</b>	Alpha-2-macroglobulin receptor-associated protein, Alpha-2-MRAP, Low density lipoprotein receptor-related protein-associated protein 1, RAP, LRPAP1, A2MRAP
<b>Target/Specificity</b>	This LRPAP1 antibody is generated from rabbits immunized with a KLH conjugated synthetic peptide between 281-309 amino acids from the C-terminal region of human LRPAP1.
<b>Dilution</b>	IHC-P~~1:100~500 FC~~1:10~50 WB~~1:1000 E~~Use at an assay dependent concentration.
<b>Format</b>	Purified polyclonal antibody supplied in PBS with 0.09% (W/V) sodium azide. This antibody is purified through a protein A column, followed by peptide affinity purification.
<b>Storage</b>	Maintain refrigerated at 2-8°C for up to 2 weeks. For long term storage store at -20°C in small aliquots to prevent freeze-thaw cycles.
<b>Precautions</b>	LRPAP1 Antibody (C-term) is for research use only and not for use in diagnostic or therapeutic procedures.

## Protein Information

---

<b>Name</b>	LRPAP1 ( <a href="#">HGNC:6701</a> )
<b>Synonyms</b>	A2MRAP
<b>Function</b>	Molecular chaperone for LDL receptor-related proteins that may regulate

their ligand binding activity along the secretory pathway.

## Cellular Location

Rough endoplasmic reticulum lumen. Endoplasmic reticulum-Golgi intermediate compartment lumen. Golgi apparatus, cis- Golgi network. Golgi apparatus lumen. Endosome lumen. Cell surface. Note=May be associated with receptors at the cell surface.

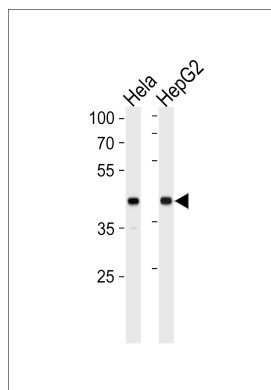
## Background

LRPAP1 interacts with LRP1/alpha-2-macroglobulin receptor and glycoprotein 330.

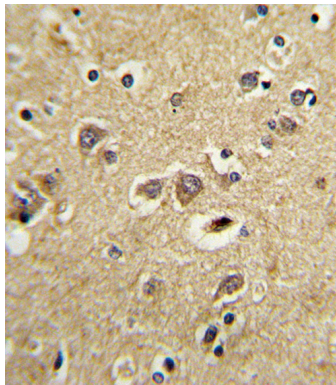
## References

Lisi,S., et.al., J. Endocrinol. Invest. 30 (10), 839-843 (2007)  
Vertegaal,A.C., et.al., Mol. Cell Proteomics 5 (12), 2298-2310 (2006)

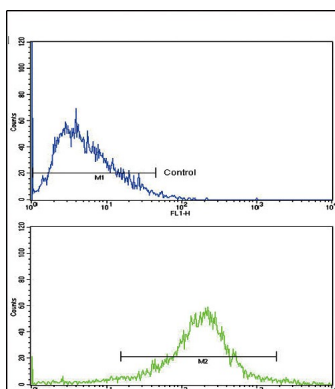
## Images



LRPAP1 Antibody (C-term) (Cat. #AP8529b) western blot analysis in HeLa, HepG2 cell line lysates (35ug/lane). This demonstrates the LRPAP1 antibody detected the LRPAP1 protein (arrow).



Formalin-fixed and paraffin-embedded human brain tissue with LRPAP1 Antibody (C-term), which was peroxidase-conjugated to the secondary antibody, followed by DAB staining. This data demonstrates the use of this antibody for immunohistochemistry; clinical relevance has not been evaluated.



Flow cytometric analysis of HepG2 cells using LRPAP1 Antibody (C-term)(bottom histogram) compared to a negative control cell (top histogram). FITC-conjugated goat-anti-rabbit secondary antibodies were used for the analysis.

## Citations

---

- [Primate-specific miR-603 is implicated in the risk and pathogenesis of Alzheimer's disease.](#)

Please note: All products are 'FOR RESEARCH USE ONLY. NOT FOR USE IN DIAGNOSTIC OR THERAPEUTIC PROCEDURES'.