

USF2 Antibody (Center)

Affinity Purified Rabbit Polyclonal Antibody (Pab)

Catalog # AP8585c

Product Information

Application	WB, IHC-P, E
Primary Accession	Q15853
Other Accession	Q63665 , Q64705
Reactivity	Human, Mouse
Predicted	Rat
Host	Rabbit
Clonality	Polyclonal
Isotype	Rabbit IgG
Clone Names	RB22338
Calculated MW	36955
Antigen Region	218-246

Additional Information

Gene ID	7392
Other Names	Upstream stimulatory factor 2, Class B basic helix-loop-helix protein 12, bHLHb12, FOS-interacting protein, FIP, Major late transcription factor 2, Upstream transcription factor 2, USF2, BHLHB12
Target/Specificity	This USF2 antibody is generated from rabbits immunized with a KLH conjugated synthetic peptide between 218-246 amino acids from the Central region of human USF2.
Dilution	WB~~1:1000 IHC-P~~1:100~500 E~~Use at an assay dependent concentration.
Format	Purified polyclonal antibody supplied in PBS with 0.09% (W/V) sodium azide. This antibody is purified through a protein A column, followed by peptide affinity purification.
Storage	Maintain refrigerated at 2-8°C for up to 2 weeks. For long term storage store at -20°C in small aliquots to prevent freeze-thaw cycles.
Precautions	USF2 Antibody (Center) is for research use only and not for use in diagnostic or therapeutic procedures.

Protein Information

Name	USF2
Synonyms	BHLHB12

Function	Transcription factor that binds to a symmetrical DNA sequence (E-boxes) (5'-CACGTG-3') that is found in a variety of viral and cellular promoters.
Cellular Location	Nucleus.
Tissue Location	Ubiquitous.

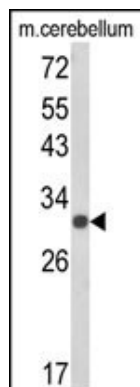
Background

USF2 is a member of the basic helix-loop-helix leucine zipper family, and can function as a cellular transcription factor. This protein can activate transcription through pyrimidine-rich initiator (Inr) elements and E-box motifs.

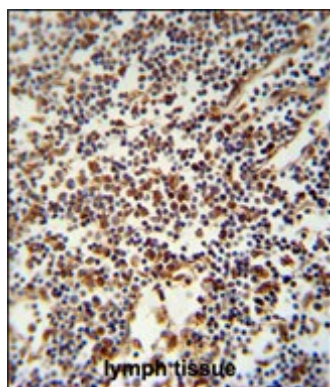
References

Olsen,J.V., et.al., Cell 127 (3), 635-648 (2006)
Groenen,P.M., et.al., Genomics 38 (2), 141-148 (1996)

Images



Western blot analysis of USF2 Antibody (Center) (Cat. #AP8585c) in mouse cerebellum tissue lysates (35ug/lane).USF2 (arrow) was detected using the purified Pab.



USF2 Antibody (Center) (Cat. #AP8585c) immunohistochemistry analysis in formalin fixed and paraffin embedded human lymph tissue followed by peroxidase conjugation of the secondary antibody and DAB staining. This data demonstrates the use of the USF2 Antibody (Center) for immunohistochemistry. Clinical relevance has not been evaluated.

Please note: All products are 'FOR RESEARCH USE ONLY. NOT FOR USE IN DIAGNOSTIC OR THERAPEUTIC PROCEDURES'.