

# HPD Antibody (N-term)

Affinity Purified Rabbit Polyclonal Antibody (Pab)

Catalog # AP8591a

## Product Information

---

|                          |                        |
|--------------------------|------------------------|
| <b>Application</b>       | WB, IHC-P, FC, E       |
| <b>Primary Accession</b> | <a href="#">P32754</a> |
| <b>Reactivity</b>        | Human, Mouse           |
| <b>Host</b>              | Rabbit                 |
| <b>Clonality</b>         | Polyclonal             |
| <b>Isotype</b>           | Rabbit IgG             |
| <b>Clone Names</b>       | RB17892                |
| <b>Calculated MW</b>     | 44964                  |
| <b>Antigen Region</b>    | 92-121                 |

## Additional Information

---

|                           |                                                                                                                                                                              |
|---------------------------|------------------------------------------------------------------------------------------------------------------------------------------------------------------------------|
| <b>Gene ID</b>            | 3242                                                                                                                                                                         |
| <b>Other Names</b>        | 4-hydroxyphenylpyruvate dioxygenase, 4-hydroxyphenylpyruvic acid oxidase, 4HPPD, HPD, HPPDase, HPD, PPD                                                                      |
| <b>Target/Specificity</b> | This HPD antibody is generated from rabbits immunized with a KLH conjugated synthetic peptide between 92-121 amino acids from the N-terminal region of human HPD.            |
| <b>Dilution</b>           | WB~~1:1000 IHC-P~~1:100~500 FC~~1:10~50 E~~Use at an assay dependent concentration.                                                                                          |
| <b>Format</b>             | Purified polyclonal antibody supplied in PBS with 0.09% (W/V) sodium azide. This antibody is purified through a protein A column, followed by peptide affinity purification. |
| <b>Storage</b>            | Maintain refrigerated at 2-8°C for up to 2 weeks. For long term storage store at -20°C in small aliquots to prevent freeze-thaw cycles.                                      |
| <b>Precautions</b>        | HPD Antibody (N-term) is for research use only and not for use in diagnostic or therapeutic procedures.                                                                      |

## Protein Information

---

|                 |                                                                         |
|-----------------|-------------------------------------------------------------------------|
| <b>Name</b>     | HPD                                                                     |
| <b>Synonyms</b> | PPD                                                                     |
| <b>Function</b> | Catalyzes the conversion of 4-hydroxyphenylpyruvic acid to homogentisic |

acid, one of the steps in tyrosine catabolism.

### Cellular Location

Cytoplasm {ECO:0000250|UniProtKB:P32755}. Endoplasmic reticulum membrane {ECO:0000250|UniProtKB:P32755}; Peripheral membrane protein {ECO:0000250|UniProtKB:P32755}. Golgi apparatus membrane {ECO:0000250|UniProtKB:P32755}; Peripheral membrane protein {ECO:0000250|UniProtKB:P32755}

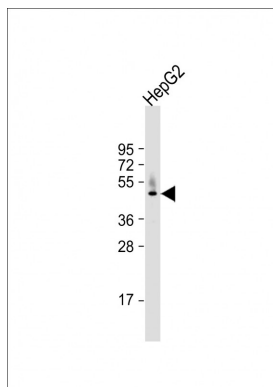
## Background

HPD is an enzyme in the catabolic pathway of tyrosine. This protein catalyzes the conversion of 4-hydroxyphenylpyruvate to homogentisate.

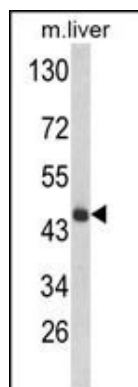
## References

Item,C.B., et.al., Mol. Genet. Metab. 91 (4), 379-383 (2007)  
Wistow,G., et.al., Mol. Vis. 8, 171-184 (2002)

## Images

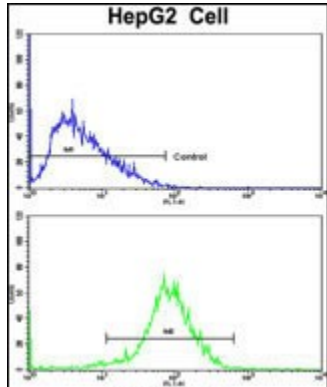
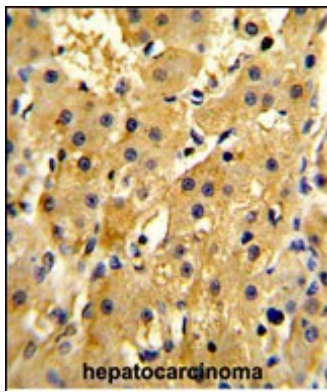


Anti-HPD Antibody (N-term) at 1:1000 dilution + HepG2 whole cell lysate Lysates/proteins at 20 µg per lane. Secondary Goat Anti-Rabbit IgG, (H+L), Peroxidase conjugated at 1/10000 dilution. Predicted band size : 45 kDa Blocking/Dilution buffer: 5% NFDM/TBST.



Western blot analysis of HPD Antibody (N-term) (Cat. #AP8591a) in mouse liver tissue lysates (35ug/lane). HPD (arrow) was detected using the purified Pab.

Formalin-fixed and paraffin-embedded human hepatocarcinoma reacted with HPD Antibody (N-term), which was peroxidase-conjugated to the secondary antibody, followed by DAB staining. This data demonstrates the use of this antibody for immunohistochemistry; clinical relevance has not been evaluated.



Flow cytometric analysis of HepG2 cells using HPD Antibody (N-term)(bottom histogram) compared to a negative control cell (top histogram). FITC-conjugated goat-anti-rabbit secondary antibodies were used for the analysis.

Please note: All products are 'FOR RESEARCH USE ONLY. NOT FOR USE IN DIAGNOSTIC OR THERAPEUTIC PROCEDURES'.