

HLA-B Antibody (N-term)

Affinity Purified Rabbit Polyclonal Antibody (Pab)

Catalog # AP8616a

Product Information

Application	WB, IHC-P-Leica, FC, E
Primary Accession	P03989
Other Accession	P30490 , P30488 , P30487 , P30486 , P30485 , P30483 , P30481 , P30479 , Q04826 , P18463 , P30464 , P30461
Reactivity	Human
Host	Rabbit
Clonality	Polyclonal
Isotype	Rabbit IgG
Clone Names	RB20998
Antigen Region	62-90

Additional Information

Other Names	HLA class I histocompatibility antigen, B-27 alpha chain, MHC class I antigen B*27, HLA-B, HLAB
Target/Specificity	This HLA-B antibody is generated from rabbits immunized with a KLH conjugated synthetic peptide between 62-90 amino acids from the N-terminal region of human HLA-B.
Dilution	WB~~1:1000 IHC-P-Leica~~1:500 FC~~1:25 E~~Use at an assay dependent concentration.
Format	Purified polyclonal antibody supplied in PBS with 0.05% (V/V) Proclin 300. This antibody is purified through a protein A column, followed by peptide affinity purification.
Storage	Maintain refrigerated at 2-8°C for up to 2 weeks. For long term storage store at -20°C in small aliquots to prevent freeze-thaw cycles.
Precautions	HLA-B Antibody (N-term) is for research use only and not for use in diagnostic or therapeutic procedures.

Protein Information

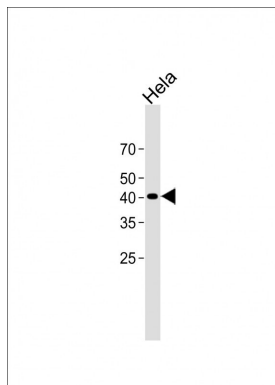
Background

HLA-B is involved in the presentation of foreign antigens to the immune system.

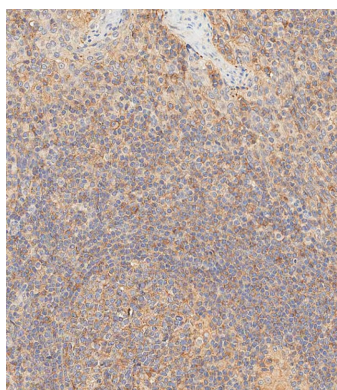
References

Higgins,C.M., et.al., Ann. Rheum. Dis. 51 (7), 855-862 (1992)
Guild,B.C.et.al., J. Biol. Chem. 259 (14), 9235-9240 (1984)
Orr,H.T., et.alt., Biochemistry 18 (25), 5711-5720 (1979)

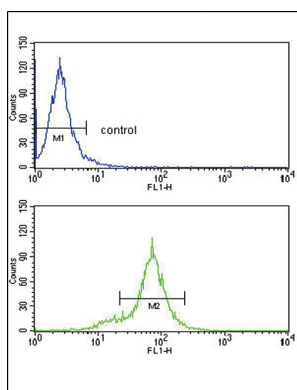
Images



All lanes: Anti-HLA-B Antibody (N-term) at 1:1000 dilution + HeLa whole cell lysate Lysates/proteins at 20 µg per lane. Secondary: Goat Anti-Rabbit IgG, (H+L), Peroxidase conjugated (ASP1615) at 1/15000 dilution. Observed band size: 40 KDa Blocking/Dilution buffer: 5% NFDm/TBST.



Immunohistochemical analysis of paraffin-embedded Human tonsil tissue using AP8616a performed on the Leica® BOND RXm. Tissue was fixed with formaldehyde at room temperature, antigen retrieval was by heat mediation with a EDTA buffer (pH9. 0). Samples were incubated with primary antibody(1:500) for 1 hours at room temperature. A undiluted biotinylated CRF Anti-Polyvalent HRP Polymer antibody was used as the secondary antibody.



HLA-B Antibody (N-term) (Cat.#AP8616a) flow cytometry analysis of HepG2 cells (bottom histogram) compared to a negative control cell (top histogram). FITC-conjugated goat-anti-rabbit secondary antibodies were used for the analysis.

Please note: All products are 'FOR RESEARCH USE ONLY. NOT FOR USE IN DIAGNOSTIC OR THERAPEUTIC PROCEDURES'.