

# TSHB Antibody (Center)

Affinity Purified Rabbit Polyclonal Antibody (Pab)

Catalog # AP8617c

## Product Information

---

<b>Application</b>	WB, IHC-P, FC, IF, E
<b>Primary Accession</b>	<a href="#">P01222</a>
<b>Other Accession</b>	<a href="#">P12656</a>
<b>Reactivity</b>	Human, Rat, Mouse
<b>Predicted</b>	Mouse
<b>Host</b>	Rabbit
<b>Clonality</b>	Polyclonal
<b>Isotype</b>	Rabbit IgG
<b>Clone Names</b>	RB21119
<b>Calculated MW</b>	15639
<b>Antigen Region</b>	58-86

## Additional Information

---

<b>Gene ID</b>	7252
<b>Other Names</b>	Thyrotropin subunit beta, Thyroid-stimulating hormone subunit beta, TSH-B, TSH-beta, Thyrotropin beta chain, Thyrotropin alfa, TSHB
<b>Target/Specificity</b>	This TSHB antibody is generated from rabbits immunized with a KLH conjugated synthetic peptide between 58-86 amino acids from the Central region of human TSHB.
<b>Dilution</b>	WB~~1:1000 IHC-P~~1:100~500 FC~~1:10~50 IF~~1:10~50 E~~Use at an assay dependent concentration.
<b>Format</b>	Purified polyclonal antibody supplied in PBS with 0.05% (V/V) Proclin 300. This antibody is purified through a protein A column, followed by peptide affinity purification.
<b>Storage</b>	Maintain refrigerated at 2-8°C for up to 2 weeks. For long term storage store at -20°C in small aliquots to prevent freeze-thaw cycles.
<b>Precautions</b>	TSHB Antibody (Center) is for research use only and not for use in diagnostic or therapeutic procedures.

## Protein Information

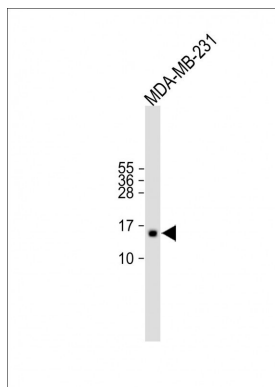
---

<b>Name</b>	TSHB
<b>Function</b>	Indispensable for the control of thyroid structure and metabolism.

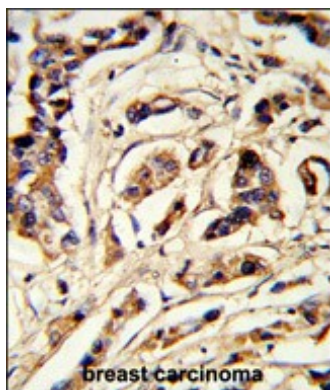
## Background

TSHB is indispensable for the control of thyroid structure and metabolism.

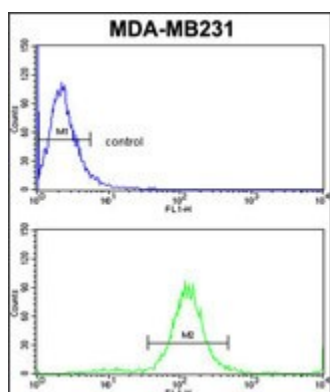
## Images



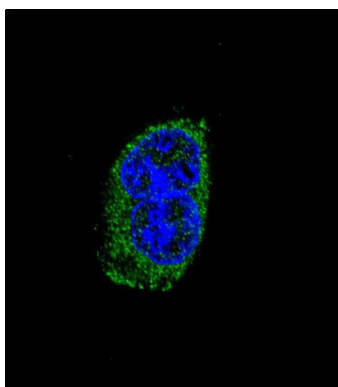
All lanes : Anti-TSHB Antibody (Center) at 1:2000 dilution  
Lane 1: MDA-MB-231 whole cell lysate Lysates/proteins at 20 µg per lane. Secondary Goat Anti-Rabbit IgG, (H+L), Peroxidase conjugated at 1/10000 dilution. Observed band size : 16 kDa Blocking/Dilution buffer: 5% NFDM/TBST.



Formalin-fixed and paraffin-embedded human breast carcinoma reacted with TSHB Antibody (Center), which was peroxidase-conjugated to the secondary antibody, followed by DAB staining. This data demonstrates the use of this antibody for immunohistochemistry; clinical relevance has not been evaluated.



TSHB Antibody (Center) (Cat. #AP8617c) flow cytometric analysis of MDA-MB231 cells (bottom histogram) compared to a negative control cell (top histogram). FITC-conjugated goat-anti-rabbit secondary antibodies were used for the analysis.



Confocal immunofluorescent analysis of TSHB Antibody (Center)(Cat#AP8617c) with MDA-MB231 cell followed by Alexa Fluor® 488-conjugated goat anti-rabbit IgG (green). DAPI was used to stain the cell nuclear (blue).

Please note: All products are 'FOR RESEARCH USE ONLY. NOT FOR USE IN DIAGNOSTIC OR THERAPEUTIC PROCEDURES'.