

MPZ Antibody (C-term)

Affinity Purified Rabbit Polyclonal Antibody (Pab)

Catalog # AP8621b

Product Information

Application	WB, FC, IHC-P, E
Primary Accession	P25189
Reactivity	Human, Rat, Mouse
Host	Rabbit
Clonality	Polyclonal
Isotype	Rabbit IgG
Clone Names	RB21459
Calculated MW	27555
Antigen Region	186-215

Additional Information

Gene ID	4359
Other Names	Myelin protein P0, Myelin peripheral protein, MPP, Myelin protein zero, MPZ
Target/Specificity	This MPZ antibody is generated from rabbits immunized with a KLH conjugated synthetic peptide between 186-215 amino acids from the C-terminal region of human MPZ.
Dilution	WB~~1:1000 FC~~1:10~50 IHC-P~~1:100~500 E~~Use at an assay dependent concentration.
Format	Purified polyclonal antibody supplied in PBS with 0.05% (V/V) Proclin 300. This antibody is purified through a protein A column, followed by peptide affinity purification.
Storage	Maintain refrigerated at 2-8°C for up to 2 weeks. For long term storage store at -20°C in small aliquots to prevent freeze-thaw cycles.
Precautions	MPZ Antibody (C-term) is for research use only and not for use in diagnostic or therapeutic procedures.

Protein Information

Name	MPZ
Function	Is an adhesion molecule necessary for normal myelination in the peripheral nervous system. It mediates adhesion between adjacent myelin wraps and ultimately drives myelin compaction.

Cellular Location	Cell membrane; Single-pass type I membrane protein
Tissue Location	Found only in peripheral nervous system Schwann cells

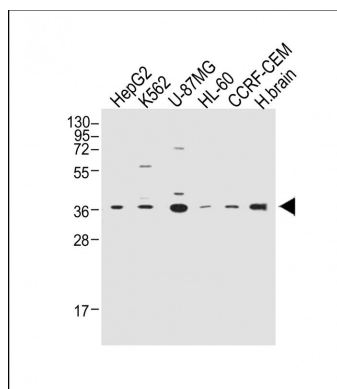
Background

MPZ is a major structural protein of peripheral myelin. Creation of an extracellular membrane face which guides the wrapping process and ultimately compacts adjacent lamellae.

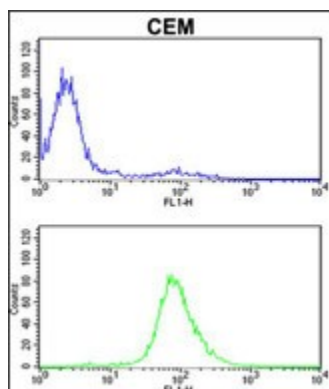
References

Tachi,N., et.al., Brain Dev. 6 (6), 560-565 (1984)
 Hayasaka,K.,et.al., Biochem. Biophys. Res. Commun. 180 (2), 515-518 (1991)
 Hayasaka,K., et.al., Genomics 17 (3), 755-758 (1993)

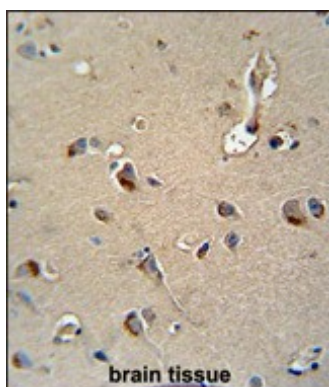
Images



All lanes : Anti-MPZ Antibody (C-term) at 1:2000 dilution
 Lane 1: HepG2 whole cell lysate Lane 2: K562 whole cell lysate Lane 3: U-87MG whole cell lysate Lane 4: HL-60 whole cell lysate Lane 5: CCRF-CEM whole cell lysate Lane 6: Human brain whole tissue lysate Lysates/proteins at 20 µg per lane. Secondary Goat Anti-Rabbit IgG, (H+L), Peroxidase conjugated at 1/2000 dilution. Predicted band size : 28 kDa Blocking/Dilution buffer: 5% NFDm/TBST.



MPZ Antibody (C-term) (Cat. #AP8621b) flow cytometric analysis of CEM cells (bottom histogram) compared to a negative control cell (top histogram). FITC-conjugated goat-anti-rabbit secondary antibodies were used for the analysis.



MPZ Antibody (C-term) (Cat. #AP8621b) immunohistochemistry analysis in formalin fixed and paraffin embedded human brain tissue followed by peroxidase conjugation of the secondary antibody and DAB staining. This data demonstrates the use of the MPZ Antibody (C-term) for immunohistochemistry. Clinical relevance has not been evaluated.

Please note: All products are 'FOR RESEARCH USE ONLY. NOT FOR USE IN DIAGNOSTIC OR THERAPEUTIC PROCEDURES'.