

PTAR1 Antibody (Center)

Affinity Purified Rabbit Polyclonal Antibody (Pab)

Catalog # AP8622c

Product Information

Application	WB, IHC-P, FC, E
Primary Accession	Q7Z6K3
Reactivity	Human
Host	Rabbit
Clonality	Polyclonal
Isotype	Rabbit IgG
Clone Names	RB21556
Calculated MW	46405
Antigen Region	60-89

Additional Information

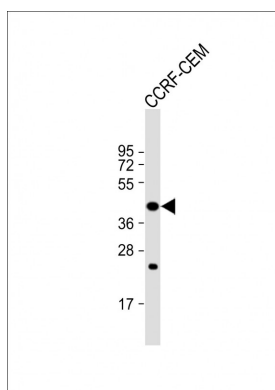
Gene ID	375743
Other Names	Protein prenyltransferase alpha subunit repeat-containing protein 1, PTAR1
Target/Specificity	This PTAR1 antibody is generated from rabbits immunized with a KLH conjugated synthetic peptide between 60-89 amino acids from the Central region of human PTAR1.
Dilution	WB~~1:1000 IHC-P~~1:100~500 FC~~1:10~50 E~~Use at an assay dependent concentration.
Format	Purified polyclonal antibody supplied in PBS with 0.09% (W/V) sodium azide. This antibody is purified through a protein A column, followed by peptide affinity purification.
Storage	Maintain refrigerated at 2-8°C for up to 2 weeks. For long term storage store at -20°C in small aliquots to prevent freeze-thaw cycles.
Precautions	PTAR1 Antibody (Center) is for research use only and not for use in diagnostic or therapeutic procedures.

Protein Information

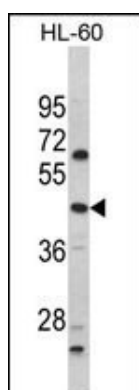
Name	PTAR1
-------------	-------

References

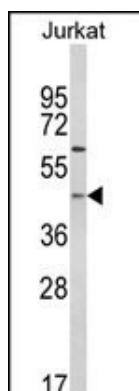
Images



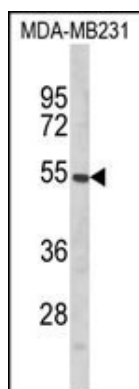
Anti-PTAR1 Antibody (Center) at 1:1000 dilution + CCRF-CEM whole cell lysate Lysates/proteins at 20 µg per lane. Secondary Goat Anti-Rabbit IgG, (H+L), Peroxidase conjugated at 1/10000 dilution. Predicted band size : 46 kDa Blocking/Dilution buffer: 5% NFDM/TBST.



Western blot analysis of PTAR1 Antibody (Center) (Cat. #AP8622c) in HL-60 cell line lysates (35ug/lane). PTAR1 (arrow) was detected using the purified Pab.

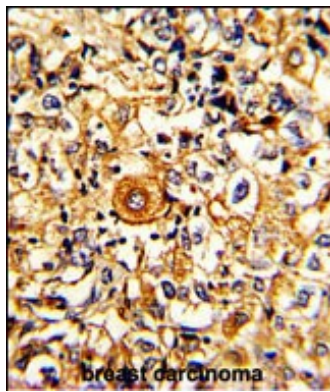


Western blot analysis of PTAR1 Antibody (Center) (Cat. #AP8622c) in Jurkat cell line lysates (35ug/lane). PTAR1 (arrow) was detected using the purified Pab.

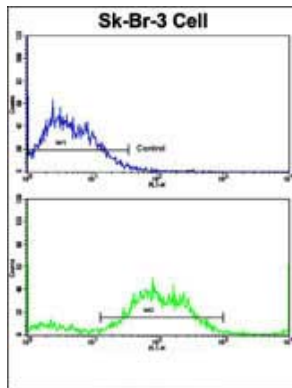


Western blot analysis of PTAR1 Antibody (Center) (Cat. #AP8622c) in MDA-MB231 cell line lysates (35ug/lane). PTAR1 (arrow) was detected using the purified Pab.

Formalin-fixed and paraffin-embedded human breast carcinoma with PTAR1 Antibody (Center), which was peroxidase-conjugated to the secondary antibody,



followed by DAB staining. This data demonstrates the use of this antibody for immunohistochemistry; clinical relevance has not been evaluated.



Flow cytometric analysis of SK-Br-3 cells using PTAR1 Antibody (Center)(bottom histogram) compared to a negative control cell (top histogram). FITC-conjugated goat-anti-rabbit secondary antibodies were used for the analysis.

Please note: All products are 'FOR RESEARCH USE ONLY. NOT FOR USE IN DIAGNOSTIC OR THERAPEUTIC PROCEDURES'.