

TARSL2 Antibody (Center)

Affinity Purified Rabbit Polyclonal Antibody (Pab)

Catalog # AP8654c

Product Information

Application	WB, E
Primary Accession	A2RTX5
Reactivity	Human, Mouse
Host	Rabbit
Clonality	Polyclonal
Isotype	Rabbit IgG
Clone Names	RB19648
Calculated MW	92646
Antigen Region	380-408

Additional Information

Gene ID	123283
Other Names	Probable threonine--tRNA ligase 2, cytoplasmic, Threonyl-tRNA synthetase, ThrRS, Threonyl-tRNA synthetase-like protein 2, TARSL2
Target/Specificity	This TARSL2 antibody is generated from rabbits immunized with a KLH conjugated synthetic peptide between 380-408 amino acids from the Central region of human TARSL2.
Dilution	WB~~1:1000 E~~Use at an assay dependent concentration.
Format	Purified polyclonal antibody supplied in PBS with 0.09% (W/V) sodium azide. This antibody is purified through a protein A column, followed by peptide affinity purification.
Storage	Maintain refrigerated at 2-8°C for up to 2 weeks. For long term storage store at -20°C in small aliquots to prevent freeze-thaw cycles.
Precautions	TARSL2 Antibody (Center) is for research use only and not for use in diagnostic or therapeutic procedures.

Protein Information

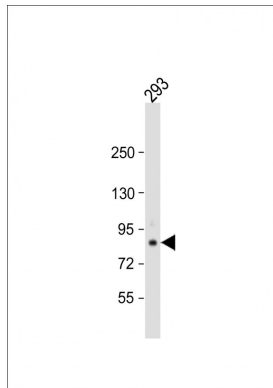
Name	TARS3 (HGNC:24728)
Synonyms	TARSL2
Function	Catalyzes the attachment of threonine to tRNA(Thr) in a two- step reaction: threonine is first activated by ATP to form Thr-AMP and then transferred to

the acceptor end of tRNA(Thr). Also edits incorrectly charged tRNA(Thr) via its editing domain, at the post- transfer stage.

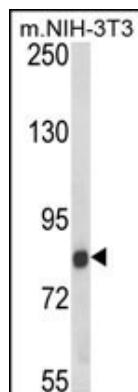
Cellular Location

Cytoplasm {ECO:0000250|UniProtKB:Q8BLY2}. Nucleus {ECO:0000250|UniProtKB:Q8BLY2}. Note=Primarily cytoplasmic. Also detected at lower levels in the nucleus {ECO:0000250|UniProtKB:Q8BLY2}

Images



Anti-TARSL2 Antibody (Center) at 1:1000 dilution + 293 whole cell lysate Lysates/proteins at 20 µg per lane. Secondary Goat Anti-Rabbit IgG, (H+L), Peroxidase conjugated at 1/10000 dilution. Predicted band size : 93 kDa Blocking/Dilution buffer: 5% NFDM/TBST.



Western blot analysis of TARSL2 Antibody (Center) (Cat. #AP8654c) in NIH-3T3 cell line lysates (35ug/lane). TARSL2 (arrow) was detected using the purified Pab.

Please note: All products are 'FOR RESEARCH USE ONLY. NOT FOR USE IN DIAGNOSTIC OR THERAPEUTIC PROCEDURES'.